

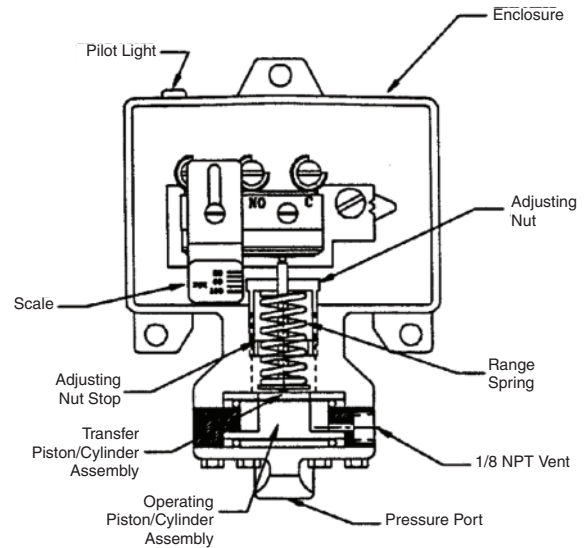
## Ashcroft® Switches

SW/PI-28B

### **U.L. LISTED AND F.M. APPROVED** **MEDIUM PRESSURE GAS AND OIL** **LIMIT CONTROL – OPTION XG6**

The Ashcroft Medium Pressure Gas and Oil Limit Control Switch is designed for use with air, LP Gas, natural gas, numbers #1 & #2 fuel oil and No. #6 oil preheated to 240°F. This limit control is an adjustable pressure operated switch with a secondary chamber to prevent fuel from entering the switch enclosure in the unlikely event that the diaphragm develops a leak. The control shuts down a fuel pump in high or low pressure conditions. The standard feature of this control are:

- setpoint indicating scale
- adjusting nut stop
- secondary chamber with vent



### **U.L. REQUIREMENTS** Underwriters Laboratories: MH8449

U.L. requires the control to be furnished with a setpoint indicating scale, an adjusting nut stop and a means of venting process fluid in the event of a diaphragm leak.

### **F.M. REQUIREMENTS** Factory Mutual: J.I. OG6AZ.AF

F.M. require the control to be equipped with a switch element position indicator. Ashcroft meets this requirement by furnishing a pilot light (XPK) marked – pressure normal – light on.

### **OPERATION**

Operation is similar to that of a standard pressure switch. If a pressure diaphragm develops a leak, fluid is sealed from the electrical enclosure by a second diaphragm. Process fluid may then be vented to a safe area.

## HOW TO ORDER

Typical B-Series Code: B4 20 B XG6 600 psi

### Ranges

15# 30# 100# 200# 400# 600#

### Optional Features

XG6 – Medium Pressure Gas & Oil Limit Control	XFM – Factory Mutual
XCH – Cover Chain	XPk – Pilot Light
X06 – 1/2 NPTM	XFS – Factory Setpoint
X07 – 1/2 NPTF	

### Actuator

B – Buna N Diaphragm  
V – Viton Diaphragm & O-Ring  
*Both include stainless steel pressure port*

### Switch Element

20, 24, 26, 27, 61, 62, 3, 64

### Enclosure

B4 – NEMA 4X Watertight  
B7 – NEMA 7 Explosion Proof

## HOW TO ORDER

Typical L-Series Code: LPSN 4G B 25 XG6 600 psi

### Ranges

15# 30# 60# 100# 200# 400# 600#

### Optional Features

XG6 – Medium Pressure Gas & Oil Limit Control  
XCH – Cover Chain  
XPk – Pilot Light  
XFS – Dual Switches – Single Setpoint

### Pressure Connection

25 – 1/4 NPTF  
06 – 1/2 NPTM  
07 – 1/2 NPTF

### Actuator

B – Buna N Diaphragm  
V – Viton Diaphragm & O-Ring  
T – Teflon  
*All include stainless steel pressure port*

### Switch Element

K, G, F, Y

### Enclosure

B4 – NEMA 4X Watertight