

Data Sheet

400-401/500-501 Threaded All-Welded Diaphragm Seals

FEATURES

- All welded construction ensures a leak-tight, tamper-proof seal
- All 316L SS construction resists corrosive attack from a wide variety of process media
- Flushing connection optional

TYPICAL USES

- Oil and Gas
- Refineries
- Chemical and Petrochemical
- Water and Wastewater
- NACE Compliant Processes
- Biogas and Biodiesel

SPECIFICATIONS

Fill Fluid:	Glycerin, Silicone, Halocarbon®, Syltherm® (see Table 2 on page 2 for more fill fluid options)
Pressure Rating (MAWP):	400/401: 4,400 psi 400 (XHP OPT.): 9,000 psi 401 (XHP OPT.): 5,000 psi 500/501: 500 psi
Connection Style:	400, 500: Threaded 401, 501: Threaded with flushing port
Process Connection Size:	¼ to 1½ NPT Female ¼ to 1 NPT Male
Instrument Connection Size:	¼ or ½ NPT Female
Added Tolerance:	±0.5% typical
Approvals:	CRN, NACE

WETTED COMPONENTS

Diaphragm	Bottom Housing
316L SS	316L SS
Hastelloy® C-276	Hastelloy® C-276
Monel® 400	Hastelloy® C-22
Titanium	Monel®
Tantalum	Titanium

NON-WETTED COMPONENTS

Top Housing	Bolts/Clamp Rings	Nuts
316L SS	Carbon steel	SS
Hastelloy® C-276		
Monel®		
Titanium		



400
Threaded All-Welded
Diaphragm Seal

500
Threaded All-Welded
Diaphragm Seal

KEY BENEFITS

- Continuous duty design
- Minimized fill volume
- Suitable for pressures up to 9,000 psi

Data Sheet

400-401/500-501 Threaded All-Welded Diaphragm Seals

TABLE 1 - OPTIONS

Code	Option	400	401	500	501	Notes
LD	SS locking device	•	•			
PU	Pipe plug for flushing connection		•		•	Plug will match bottom housing material
HB	Hastelloy® C-276 upper housing	•	•	•	•	
SE	SS rings and bolts	•	•			1,500 psi Max., 5,000 psi Max. with XHP
HP	High-pressure clamp rings	•	•			9,000 psi Max., 5,000 psi Max. with SE
6B	Cleaned for oxygen service	•	•	•	•	
AW	Single ½ NPT flushing connection		•		•	¾ NPT Female or smaller process connection
DB	Dual ½ NPT flushing connections		•		•	¾ NPT Female or smaller process connection
DK	Dual ¼ NPT flushing connections		•		•	
DU	Instrument welded to seal	•	•	•	•	
MQ	Positive material identification	•	•	•	•	
W1	Dye penetrant testing	•	•	•	•	
CD-5	NACE compliance certificate	•	•	•	•	Stainless, Hastelloy®, or Monel® wetted materials
CD-6	Typical material certification	•	•	•	•	

ORDERING CODE

Example:

02 4 00 S S 02T XCK HP

Process Connection Size

02 - ¼ NPT Male (400, 500 only)	02
04 - ½ NPT Male (400, 500 only)	
06 - ¾ NPT Male (400, 500 only)	
08 - 1 NPT Male (400, 500 only)	
25 - ¼ NPT Female	
50 - ½ NPT Female	
75 - ¾ NPT Female	
10 - 1 NPT Female	
15 - 1½ NPT Female	

Diaphragm Seal Type

4 - 400 Series All-welded clamped seal, threaded process connection	4
5 - 500 Series All-welded seal without clamps, threaded process connection	

Flushing Port

00 - No flushing port	00
01 - With flushing port	

Diaphragm Material

S - 316L SS	S
H - Hastelloy® C-276	
J - Hastelloy® C-22	
U - Tantalum (only available with Monel® top and lower housing)	
G - Hastelloy® B	
P - K-Monel® (only available with Monel® top and lower housing)	
Ti - Titanium (only available with a Titanium top and lower housing)	

Bottom Housing Material

S - 316L SS	S
H - Hastelloy® C-276	
J - Hastelloy® C-22	
M - Monel® (includes Monel® top housing standard)	
Ti - Titanium (includes Titanium top and housing standard)	

Instrument Connection Size

02T - ¼ NPT Female	02T
04T - ½ NPT Female	

Options (if choosing an option(s) must include an "X")
Fill Fluid (see table 2 on page 3 for more available fill fluids)

CG - Glycerin	
CK - Silicone SF-96	CK
CF - Halocarbon®	

Optional Features (see Table 1 above for option list)

HP - High-pressure clamp rings	HP
--------------------------------	----

Data Sheet

400-401/500-501 Threaded All-Welded Diaphragm Seals

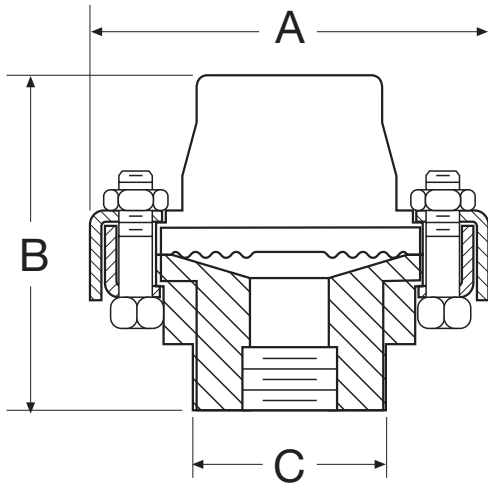
TABLE 2 - FILL FLUIDS

Fill Fluid	Temperature	Viscosity (cSt)	Code	Notes
Syltherm® XLT	-150°F to 500°F (-100°C to 260°C)	1.4	CC	Low temperature applications
Glycerin (food grade)	0°F to 400°F (-18°C to 204°C)	1,300	CG	Direct-mounting only. Not for use with vacuum service
50cSt Silicone	-40°F to 500°F (-40°C to 260°C)	50	CK	
Halocarbon® 4.2	-70°F to 300°F (-57°C to 199°C)	4.2	CF	For use with oxygen/oxidizing process media
50/50 Ethylene Glycol/Water	-25°F to 190°F (-32°C to 88°C)	2.9	CT	
Polypropylene Glycol	-50°F to 325°F (-46°C to 163°C)	54	CV	
Food-grade Silicone	-40°F to 500°F (-40°C to 260°C)	350	CZ	
10cSt Silicone	-40°F to 500°F (-40°C to 260°C)	10	DJ	
Distilled Water	40°F to 185°F (4°C to 85°C)	0.9	FJ	
Ethylene Glycol	20°F to 325°F (-7°C to 163°C)	14	FK	
50/50 Glycerin/Water	15°F to 200°F (-9°C to 93°C)	30	GH	
80/20 Glycerin/Water	15°F to 225°F (-9°C to 107°C)	270	GR	
Syltherm® 800	-40°F to 750°F (-40°C to 400°C)	10	HA	High temperature applications
Calflo® AF	-20°F to 600°F (-29°C to 316°C)	60	KF	High temperature, silicone-free
Mineral Oil	10°F to 400°F (-12°C to 204°C)	75	MY	
Neobee® M-20	5°F to 400°F (-15°C to 204°C)	9.5	NM	Food grade
95/5 Water/Propylene Glycol	40°F to 185°F (4°C to 85°C)	1.0	PY	

400-401/500-501 Threaded All-Welded Diaphragm Seals

DIMENSIONS in [] are millimeters

400 THREADED SEAL		
A	B	C
3.75 [95]	2.88 [73]	1.81 [46]



500 THREADED SEAL		
A	B	C
2.50 [63]	2.88 [73]	1.81 [46]

