

## Data Sheet

# 1005P Commercial Pressure Gauge

### FEATURES

- PowerFlex™ movement provides superior resistance to shock, vibration and pulsation
- TrueZero™ reduces reading errors by using a “zero box” instead of conventional dial pins
- Panel Mount conversion kit to transform back connect gauge into a panel-mount gauge
- Corrosion resistance ABS case
- Bulk packaging

### TYPICAL USES

- Pumps and Compressors
- Filter Regulators and Water Pumps
- Beverage Dispensing Systems
- Instrument and Controls
- Medical equipment
- Automotive applications
- Fluid power equipment



**1005P**  
 1½", 2", 2½", 3½" dial sizes



### SPECIFICATIONS

Accuracy:	±3-2-3% of span (ASME B40.100 Grade B)
Sizes:	1½", 2", 2½", 3½"
Ranges:	1½" Vacuum to 1,000 psi 2", 2½", 3½" Vacuum, compound to 6,000 psi
Process Connection Location:	Lower, Back
Process Connection Size:	½" and ¾" NPT (1½" not available in ¾" NPT)
Dial:	Black figures on white background, aluminum
Pointer:	Black, aluminum (STD.)
Movement:	PowerFlex™ with polyester segment
Dampening options:	FlutterGuard™
Approvals:	UL 404, High Pressure Gas (2"; 1,000-4,000 psi) UL 252A, Compressed Gas Regulator Accessories (2"; 30-300 psi)

### WETTED COMPONENTS

Bourdon Tube	Process Connection	Restrictor
Bronze	Brass	0.013" orifice throttle plug in gauges 1,000 psi and above

### NON-WETTED COMPONENTS

Case	Window
Black ABS	Polycarbonate

### KEY BENEFITS

- Customizable for new applications
- Conversion kits available

### MIN/MAX TEMPERATURE LIMITS

Version	Ambient	Process	Storage
1005P	-40°F to 150°F (-40°C to 65°C)	-40°F to 150°F (-40°C to 65°C)	-40°F to 150°F (-40°C to 65°C)

## Data Sheet

### 1005P Commercial Pressure Gauge

ORDERING CODE	Example:	20	W	1005	P	H	02	L	XAP	400#
<b>Dial Size</b>										
15 - 1½"										
20 - 2"		20								
25 - 2½"										
35 - 3½"										
<b>Movement type</b>										
PowerFlex™			W							
<b>Model</b>										
1005				1005						
<b>Case/Window Material</b>										
P - ABS/Polycarbonate					P					
<b>Process Connection Material</b>										
H - Brass						H				
<b>Process Connection Size</b>										
01 - ⅛ NPT										
02 - ¼ NPT (not available in 1½")							02			
KJ - ¼ straight BSPT; PT ¼ JIS										
KA - ¼ tapered BSPT; PT ¼ JIS										
KG - ⅛ BSPT; R ⅛										
13 - G ¼ B										
77 - G ⅛ no spigot										
<b>Process Connection Location</b>										
L - Lower								L		
B - Center back										
T - Top										
E - Left side										
D - Right side										
<b>Options:</b> See Table 1 on page 2 for additional options (If choosing an option(s) must include an "X")									X__	
AP - Adjustable pointer									AP	
<b>Ranges</b> (coding example see range table on page 3 for all standard ranges)										
<b>Single Scale</b>										
400# - 400 psi										400#

**TABLE 1 - OPTIONS (minimums may apply)**

AP	Adjustable Pointer	Z0	Bulk pack
EP	Min/max pointer	ZP	Customer part number on carton/plain white label
NP	Nickel plated socket	ZQ	Customer part number printed directly on carton
	Receiver gauge dial code; 12# - ALK (0-100 linear)	M1	Dial marking "Supply"
PR	12# - ALL (0-100%)	M2	Dial Marking "Output"
	12# - APR (0-10 sq root)	M3	Dial marking "Instrument"
RS	RoHS (EN directives 2011/65/EN and 2015/863)	T4	0.007" orifice restrictor
RU	UL252A listed. (only available in 2" dial; ranges 30-300 psi)	T5	0.013" orifice restrictor (0.013" orifice throttle plug standard in ranges 1000-6000 psi)
SF	FlutterGuard™ (includes 0.013" orifice throttle plug)	T6	Dial Marking "Transmit"
TC	Telfon® tape on socket	T7	0.020" orifice restrictor
UC	Panel mounting sleeve	T9	0.063" orifice restrictor
UL	UL404 listed. (2" dial; ranges 1,000-4,000 psi)	7F	FlutterGuard™ logo (can only be used in conjunction with XSF (FlutterGuard option))
VH	Vent hole in case		

Black protective boot (must be ordered separately - not part of product code)

# Data Sheet

## 1005P Commercial Pressure Gauge

**TABLE 2 - RANGES**

Model	1005P											
Dial Size	1½"	2"	2"	2"	2½"	2½"	2½"	3½"	3½"	3½"	3½"	
Case	ABS	ABS	ABS	ABS	ABS	ABS	ABS	ABS	ABS	ABS	ABS	
Conn. Size	⅜	⅜	¼	¼	⅜	⅜	¼	⅜	⅜	¼	¼	
Conn. Type	Lower/ Back	Lower/ Back	Lower	Back	Lower	Back	Lower/ Back	Lower	Back	Lower	Back	

psi	CODE	bar	CODE	AVAILABILITY							
30IMV/0	VAC	-1/0	VAC-ABE	•	•	•	•	•	•	•	•
30IMV/15	15#&VAC	-1/0/1.5	15/V-AAA		•	•	•	•	•	•	•
30IMV/30	30#&VAC					•	•	•	•	•	•
30IMV/60	60#&VAC	-1/0/3	60/V-AAU			•	•	•	•	•	•
30IMV/100	100#&VAC	-1/0/5	100/V-AAW		•	•	•	•	•	•	•
30IMV/160	160#&VAC		160/V-AAY			•	•	•	•	•	•
30IMV/300	300#&VAC		300/V-ABB			•	•	•	•	•	•
0/15	15#	0/1	15#-AAA	•	•	•	•	•	•	•	•
		0/1.6	20#-AAB	•	•	•	•	•	•	•	•
0/30	30#	0/2.5	30#-AAD	•	•	•	•	•	•	•	•
0/60	60#	0/4	60#-AAF	•	•	•	•	•	•	•	•
0/100	100#	0/6	100#-AAG	•	•	•	•	•	•	•	•
		0/7	100#-AAH	•	•	•	•	•	•	•	•
0/160	160#	0/10	160#-AAI	•	•	•	•	•	•	•	•
0/200	200#	0/16	200#-AAL	•	•	•	•	•	•	•	•
0/300	300#			•	•	•	•	•	•	•	•
0/400	400#	0/25	300#-AAN	•	•	•	•	•	•	•	•
0/600	600#	0/40	600#-AAP	•	•	•	•	•	•	•	•
0/1000	1000#	0/60	1000#-AMK	•		•	•	•	•	•	•
0/1500	1500#	0/100	1500#-AMM			•	•		•	•	•
0/2000	2000#	0/160	2000#-AMO			•	•		•	•	•
0/3000	3000#					•	•		•	•	•
0/4000	4000#	0/250	4000#-AMQ			•	•		•	•	•
0/5000	5000#					•	•		•	•	•
0/6000	6000#	0/400	6000#-AUE			•	•		•	•	•
kPa	CODE	kg/cm²	CODE	AVAILABILITY							
-100/0	VAC-AGF	76cmHG/0	VAC-ADP	•	•	•	•	•	•	•	•
		76cmHG/0/1	15/V-ADB		•	•	•	•	•	•	•
-100/0/150	30/V-AFT	76cmHG/0/2	30/V-ADD			•	•	•	•	•	•
-100/0/300	60/V-AFV	76cmHG/0/3	60/V-BEI			•	•	•	•	•	•
		76cmHG/0/4	60/V-ALQ			•	•	•	•	•	•
-100/0/500	100/V-AFX	76cmHG/0/6	100/V-BEJ		•	•	•	•	•	•	•
-100/0/900	160/V-AFZ	76cmHG/0/6	160/V-ADI			•	•	•	•	•	•
		76cmHG/0/20	300/V-BEL			•	•	•	•	•	•
0/100	15#-AFB	0/1	15#-ACK	•	•	•	•	•	•	•	•
0/160	20#-AFC			•	•	•	•	•	•	•	•
0/200	30#-AFD	0/2	30#-ACM	•	•	•	•	•	•	•	•
0/250	30#-AFE	0/3	45#-ACO	•	•	•	•	•	•	•	•
0/400	60#-AFG	0/4	60#-ACP	•	•	•	•	•	•	•	•
0/600	100#-AFH	0/6	100#-ACQ	•	•	•	•	•	•	•	•
0/800	120#-BAT			•	•	•	•	•	•	•	•
0/1000	160#-AFJ	0/10	160#-ACS	•	•	•	•	•	•	•	•
0/1600	200#-AFM	0/15	200#-BEA	•	•	•	•	•	•	•	•
		0/20	300#-BEB	•	•	•	•	•	•	•	•
0/2500	400#-AFO	0/25	400#-ACX	•	•	•	•	•	•	•	•
0/4000	600#-AFQ	0/35	600#-BEC	•	•	•	•	•	•	•	•
		0/40	600#-ACZ	•	•	•	•	•	•	•	•
		0/50	600#-BED	•	•	•	•	•	•	•	•
0/6000	1000#-BAU	0/70	1000#-ANB	•		•	•		•	•	•
0/8000	1000#-BAV			•		•	•		•	•	•
0/10000	1500#-ATK	0/100	1500#-ANC			•	•		•	•	•
0/16000	2000#-BAW	0/150	2000#-BEE			•	•		•	•	•
0/25000	4000#-BAX	0/250	4000#-ANG			•	•		•	•	•
		0/350	5000#-BEF			•	•		•	•	•
0/40000	6000#-ATU	0/500	6000#-BEG			•	•		•	•	•

**FOR DUAL SCALE RANGES CONSULT FACTORY**

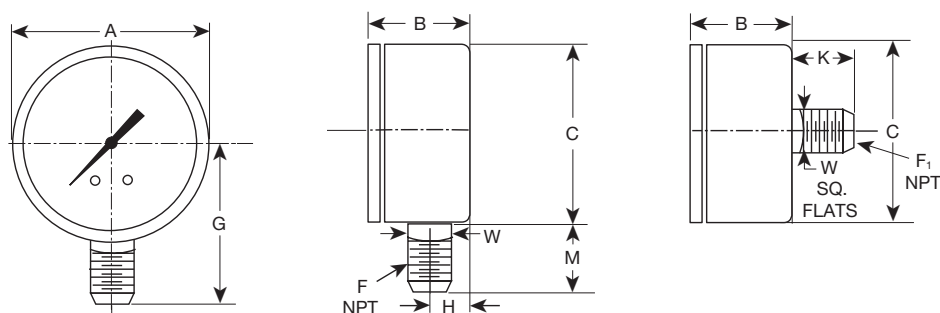
# Data Sheet

## 1005P Commercial Pressure Gauge

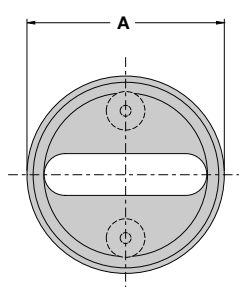
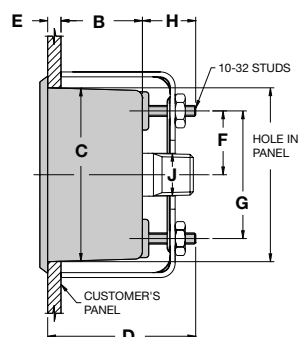
**DIMENSIONS** in [ ] are millimeters

For reference only, consult Ashcroft for specific dimensional drawings

Lower and Back Connections															
Dial Size inches [mm]	A		B		C	F NPT	F <sub>1</sub> NPT	G	H	K	M	W		Weight oz / kg	
	Lower	Back	Lower	Back								Lower	Back	Lower	Back
1½"	1.66 [42]	1.64 [42]	1.07 [27]	1.01 [26]	1.6 [41]	⅛	⅛	1.41 [36]	0.38 [10]	0.62 [17]	0.62 [16]	0.56 [14]	0.44 [11]	1.62 oz 0.068 kg	1.55 oz 0.044 kg
2"	2.11 [54]	2.11 [54]	1.07 [27]	1.05 [27]	2.05 [52]	⅛ or ¼	⅛ or ¼	1.85 [47]	0.38 [10]	0.85 [22]	0.82 [21]	0.56 [14]	0.56 [14]	2.40 oz 0.068	2.75 oz 0.078 kg
2½"	2.74 [70]	2.74 [70]	1.12 [28]	1.14 [29]	2.67 [68]	⅛ or ¼	⅛ or ¼	2.18 [55]	0.38 [10]	0.78 [20]	0.83 [21]	0.56 [14]	0.56 [14]	2.89 oz 0.082 kg	3.17 oz 0.090 kg
3½"	3.70 [94]	3.70 [94]	1.14 [29]	1.28 [32]	3.62 [92]	⅛ or ¼	⅛ or ¼	2.72 [69]	0.43 [11]	0.72 [18]	0.92 [23]	0.56 [14]	0.56 [14]	5.36 oz 0.152 kg	4.37 oz 0.124 kg



ABS Case Panel Mount Sleeve										
Inches [mm]	A	B	C	D	E	F	G	H	J	Conn. NPT
1½"	2.05 [52]	1.04 [27]	1.75 [45]	1.85 [47]	0.13 [3]	0.60 [14]	1.19 [30]	0.68 [18]	7/16 sq. [11]	⅛
2"	2.52 [64]	1.04 [27]	2.23 [57]	1.89 [48]	0.17 [4]	0.82 [21]	1.63 [41]	0.68 [18]	9/16 sq. [14]	⅛ or ¼
2½"	3.17 [81]	1.13 [29]	2.84 [72]	1.98 [50]	0.17 [4]	1.13 [29]	2.26 [57]	0.68 [18]	9/16 sq. [14]	⅛ or ¼
3½"	4.08 [104]	1.23 [31]	3.80 [96]	2.11 [54]	0.20 [5]	1.61 [41]	3.22 [82]	0.68 [18]	9/16 sq. [14]	⅛ or ¼



Panel Cut Out		
Inches [mm]	Min.	Max.
1½"	1.850 [47]	1.968 [50]
2"	2.330 [59]	2.440 [62]
2½"	2.920 [74]	3.075 [78]
3½"	3.898 [99]	4.016 [102]