

## Data Sheet

### CI Bimetal Thermometer

#### FEATURES

- Hermetically sealed case to prevent entry of moisture, interior corrosion and coil freeze up
- Maxivision® dial for precise readings (minimize parallax reading errors)
- Silicone dampened coil for reduction of pointer flutter on high vibration applications and provides improved response times
- Customized dial printing

#### TYPICAL USES

- General Industrial
- HVAC
- Equipment Skids
- Pharmaceutical / Biotech
- Food and Beverages



**CI Bimetal**  
2", 3", 5" dial sizes



#### SPECIFICATIONS

Accuracy:	±1% of span ASME B40.200 (B40.3 Grade A)	
Stem Length:	2½" to 24"	
Dial Sizes:	2", 3", 5"	
Dial Style:	Maxivision®, black figures on white background	
Overtemperature Limits:	Top of Range °F	Max. Over Temperature
	up to 250	100% of span
	251-550	50% of span
	551-1,000	800°F <sup>(1)</sup>

<sup>(1)</sup> Satisfactory for continuous service up to 800°F (425°C).  
Can be used for intermittent service from 800 to 1,000°F (425 to 500°C). Use Ashcroft Duratemp® thermometers for ranges above and below those listed above.

Process Connection:	Plain, Pointed Stem, ¼ NPT, ½ NPT
Stem diameter:	0.250", .375"
Case & Stem:	304 SS, Hermetically sealed
Process Connection Location:	2": Rear 3", 5": Lower, rear
Pointer:	Black
Window:	Glass, Acrylic, Safety Glass
Approvals:	RoHS

#### KEY BENEFITS

- Tamper resistant case
- NEMA 4X/IP66 protection
- 5-year limited warranty
- All welded stainless steel construction

#### MIN/MAX TEMPERATURE LIMITS

Version	Ambient
Dry	-40°F to 200°F (-40°C to 93°C)

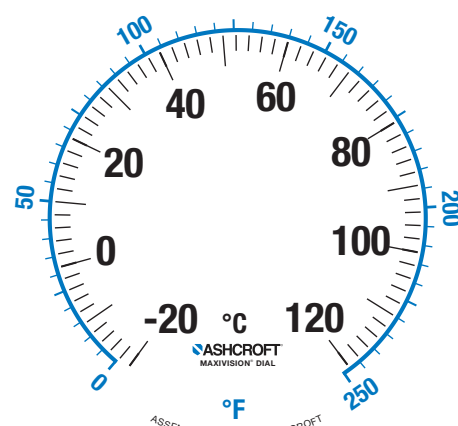
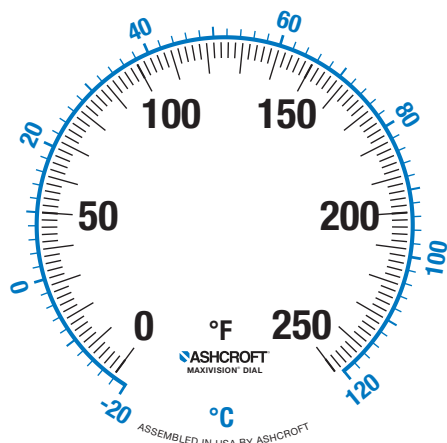
## Data Sheet

### CI Bimetal Thermometer

ORDERING CODE	Example:	30CI	60	R	060	0/200°F	XSG
<b>Dial Size and Model</b>							
20CI - 2" Tamper resistant bimetal							
30CI - 3" Tamper resistant bimetal		30CI					
50CI - 5" Tamper resistant bimetal							
<b>Stem and Connection</b>							
40 - Plain - no connection							
50 - Pointed stem - no connection (2" case only)							
60 - ½ Fixed NPT for 3" & 5" but ¼ fixed NPT for 2"			60				
<b>Connection Location</b>							
R - Rear connection				R			
L - Lower connection (Not available on 2" case)							
<b>Stem Length (Consult factory for custom or longer stem length)</b>							
025 - 2½"							
040 - 4"							
060 - 6"					060		
090 - 9"							
120 - 12"							
150 - 15"							
180 - 18"							
240 - 24"							
<b>Temperature Ranges (see table on page 3)</b>							
0/200°F						0/200°F	
<b>Options - (if choosing an option(s) must include an "X")</b>							
CS - Dual scale							X_
DM - Dial marking							
NH - SS tag							
PD - Plastic window							
SG - Shatterproof glass							SG
C4 - Individual calibration certification							
S1 - Silicone free							
3B - ¾" stem diameter with ½ NPT							
02 - ¼ NPT (only available on rear connection)							

## Data Sheet

### CI Bimetal Thermometer



Fahrenheit Inner Range		
Inner °F	Outer °C	Restrictions
-100/100	-70/40	
-80/120	-60/50	
-50/200	-40/93	
-50/250	-40/120	
Can be liquid filled	-40/120	-40/50
	-40/160	-40/70
	-20/120	-30/50
	0/100	-20/40
	0/150	-20/65
	0/200	-20/93
	0/250	-20/120
	0/300	-20/150
	0/350	-20/170
	0/500	-20/260
	20/120	-5/50
	30/130	0/55
	30/240	0/115
	50/300	10/150
	50/400	10/200
	50/550	10/290
	0/700	-20/370
	100/800	50/430
	150/750	65/395
	200/700	100/370
	200/1000	100/550
		4" minimum Satisfactory continuous service from 800° F or 426° C Intermittent service from 800° to 1000° F or 425° C to 500° C

Celsius Inner Range		
Inner °C	Outer °F	Restrictions
-50/50	-50/120	
-50/180	-50/350	
Can be Liquid filled	-40/100	-40/210
	-40/160	-40/320
	-30/70	-20/160
	-20/180	0/350
	-20/120	0/250
	-10/50	20/120
	-10/110	20/230
	0/60	30/140
	0/100	30/210
	0/120	30/250
	0/150	30/300
	0/200	30/400
	0/250	30/480
	0/300	30/570
	10/150	50/300
	0/400	30/750
	0/500	30/390
	50/450	120/840
	100/500	220/930
		4" minimum Satisfactory continuous service from 800° F or 426° C Intermittent service from 800° to 1000° F or 425° C to 500° C
		4" minimum Satisfactory continuous service from 800° F or 426° C Intermittent service from 800° to 1000° F or 425° C to 500° C

## Data Sheet

### CI Bimetal Thermometer

#### DIMENSIONS in [ ] are millimeters

For reference only, consult Ashcroft for specific dimensional drawings

Dial Size (Inches)	Process Connection Locations	A	B	C	D	E	S	NPT	Hex.	Weight (oz) <sup>(1)</sup> S - 2 1/2"
2	Rear (Plain)	2 <sup>3</sup> / <sub>32</sub> [53]	3/ <sub>8</sub> [10]	3/ <sub>8</sub> [10]			(2)		1 <sup>1</sup> / <sub>16</sub>	4 1/2
2	Rear (Plain, pointed stem)	2 <sup>3</sup> / <sub>32</sub> [53]	3/ <sub>8</sub> [10]	3/ <sub>8</sub> [10]			(2)		1 <sup>1</sup> / <sub>16</sub>	4 1/2
2	Rear (Threaded)	2 <sup>3</sup> / <sub>32</sub> [53]	3/ <sub>8</sub> [10]	3/ <sub>8</sub> [10]			(2)	1/4	1 <sup>1</sup> / <sub>16</sub>	4 1/2
3	Rear	3 <sup>5</sup> / <sub>32</sub> [80]	1 <sup>9</sup> / <sub>32</sub> [15]	3/ <sub>8</sub> [10]			(2)	1/2	7/ <sub>8</sub>	7
3	Lower	3 <sup>5</sup> / <sub>32</sub> [80]	1 <sup>27</sup> / <sub>32</sub> [47]		2 <sup>5</sup> / <sub>8</sub> [67]	1/ <sub>4</sub> [6]	(2)	1/2	7/ <sub>8</sub>	11
5	Rear	5 <sup>1</sup> / <sub>32</sub> [128]	2 <sup>3</sup> / <sub>32</sub> [18]	3/ <sub>8</sub> [10]			(2)	1/2	7/ <sub>8</sub>	16
5	Lower	5 <sup>1</sup> / <sub>32</sub> [128]	1 <sup>15</sup> / <sub>16</sub> [49]		3 <sup>5</sup> / <sub>8</sub> [92]	1/ <sub>4</sub> [6]	(2)	1/2	7/ <sub>8</sub>	26

#### NOTES:

- Add 1 oz. for every 2" inches of stem length
- "S" dimensions are 2 1/2, 4, 6, 9, 12, 15, 18 and 24" (STD.). Stem diameter is 1/4" (STD.)

