

Data Sheet

1007P and 1001T XOR Refrigeration Pressure Gauges

FEATURES

- PowerFlex™ movement provides superior resistance to shock, vibration and pulsation
- FlutterGuard™ (STD.) reduce movement wear and pointer flutter
- Easy access window for minor span adjustments
- 1007P ABS case offers durability and corrosion resistance
- 1001T gauges are tested to detect leaks as small as 2.8×10^{-4} cc per second

TYPICAL USES

- Refrigerant manifolds (1007P, XOR)
- Refrigerant recovery and recycling equipment (1001T, XOR)
- Automotive testing
- HVAC/R - industrial and residential air conditioning

SPECIFICATIONS

| | |
|------------------------------|---|
| Accuracy: | $\pm 1\%$ of span at zero, $\pm 2\%$ of span the first three fourths of scale, $\pm 5\%$ of span the last fourth of scale |
| Sizes: | 1007P: 2½" 1001T: 2½", 3½" |
| Ranges: | 30 in. Hg/0/120psi retard to 250psi 0/400psi 30 in. Hg/0/300psi retard to 500psi 0/800psi |
| Process Connection Location: | 1007P: lower 1001T: back |
| Process Connection Size: | 1007P: ½ NPT 1001T: ½ NPT, ¼ NPT |
| Dial: | Available refrigerant scales: R12, R22, R502, R134A, 410A |
| Pointer: | Black, aluminum |
| Movement: | Patented PowerFlex™ with polyester segment. Slotted span screw for minor span adjustments |
| Dampening: | FlutterGuard™ |
| Restrictor: | 1007P: 0.020" orifice restrictor 1001T: 0.013" orifice restrictor |

WETTED COMPONENTS

| Bourdon Tube | Process Connection | Restrictor |
|--------------|--------------------|------------|
| Bronze | Brass | Brass |

NON-WETTED COMPONENTS

| Model | Case | Window |
|-------|--|-------------------------------|
| 1007P | Blue ABS (low pressure) Red ABS (high pressure) | Threaded polycarbonate |
| 1001T | Black painted steel | ¼ turn threaded polycarbonate |



1007P XOR
2½" dial size

1001T XOR
2½", 3½" dial size



KEY BENEFITS

- Optional connections to eliminate potential leaks at threaded joints
- Rugged Durability
- Corrosion resistance
- Customized dials

MIN/MAX TEMPERATURE LIMITS

| Version | Ambient | Process | Storage |
|-----------|-----------------------------------|-----------------------------------|-----------------------------------|
| 1007P XOR | -40°F to 150°F (-40°C to 65°C) | -40°F to 150°F (-40°C to 65°C) | -40°F to 150°F (-40°C to 65°C) |
| 1001T XOR | -40°F to 150°F (-40°C to 65°C) | -40°F to 150°F (-40°C to 65°C) | -40°F to 150°F (-40°C to 65°C) |

Data Sheet

1007P and 1001T XOR Refrigeration Pressure Gauges

| ORDERING CODE | Example: | 25 | 1001T | H | 01 | B | XORUC | 140#/V |
|---|----------|----|-------|---|----|---|-------|--------|
| Dial Size | | | | | | | | |
| 25 - 2½" | | 25 | | | | | | |
| Model | | | | | | | | |
| 1001T - Black steel case | | | 1001T | | | | | |
| 1007P - ABS case | | | | | | | | |
| Process Connection Material | | | | | | | | |
| H - Brass | | | | H | | | | |
| Process Connection Size | | | | | | | | |
| 01 - ⅛ NPT Male | | | | | 01 | | | |
| 02 - ¼ NPT Male, (N/A 1007P) | | | | | | | | |
| FPB - 37° Flare (1001T only) | | | | | | | | |
| Connection Location | | | | | | | | |
| L - Lower connection, (1007P only) | | | | | | | | |
| B - Back connection, (1001T only) | | | | | | B | | |
| Options (If choosing an option(s) must include an "X") | | | | | | | X _ _ | |
| OR - Refrigeration application | | | | | | | OR | |
| UC - Must always be on 1001T | | | | | | | | |
| RS - RoHS (EN directives 2011/65/EN and 2015/863) | | | | | | | | |
| TC - Teflon® tape on socket (1007P only) | | | | | | | | |
| ZO - Bulk pack | | | | | | | | |
| ZP - Customer P/N on carton/plain white label | | | | | | | | |
| ZQ - Customer P/N directly on carton | | | | | | | | |
| Range (coding examples only see range table on page 2 for all standard ranges) | | | | | | | | |
| Single Scales | | | | | | | | |
| 140#/V - 30"HG vac/0/120 psi retard to 250 psi | | | | | | | | 140#/V |

RANGE TABLE

| Range Description | Code | |
|---|-----------|-----------|
| | 1007P | 1001T |
| 30 in. Hg/0/120psi retard to 250psi; R502/R22/R12 | 140#-6288 | 140#-6294 |
| 30 in. Hg/0/120psi retard to 250psi; R134A | 140#-6289 | 140#-6295 |
| 0/400psi; R502/R22/R12 | 400#-6290 | 400#-6296 |
| 0/400psi; R134A | 400#-6291 | 400#-6297 |
| 30 in. Hg/0/300psi retard to 500psi; R410A | 300#-6292 | 300#-6298 |
| 0/800psi;R410A | 600#-6293 | 600#-6299 |

Data Sheet

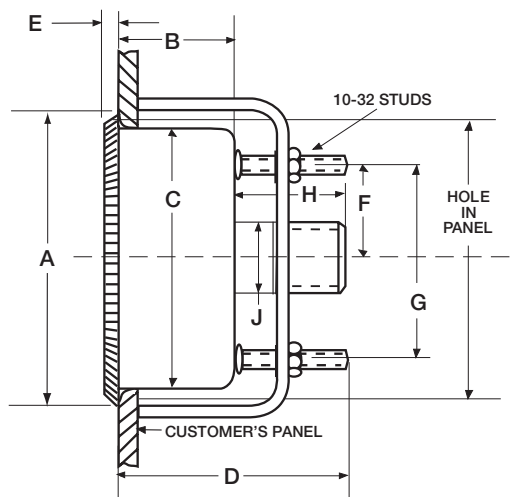
1007P and 1001T XOR Refrigeration Pressure Gauges

DIMENSIONS in [] are millimeters

For reference only, consult Ashcroft for specific dimensional drawings

| 1001T (UC) | | | | | | | | | | | |
|---------------------|------------------|--------------|------------------|--------------|---------------------------|--------------|--------------|--------------|------------------|------------|---------------------|
| Dial Size Inches | A | B | C | D | E | F | G | H | J | Conn. NPT | Weight oz / kg |
| 2½" | 2.87 [73] | 0.97 [25] | 2.57 [65] | 1.97 [50] | 0.16 [4] | 1.00 [25] | 2.00 [51] | 0.88 [22] | 9/16 sq. [14] | 1/8 or 1/4 | 6.91 oz 0.196 kg |
| 3½" | 3.96 [101] | 1.00 [25] | 3.61 [92] | 1.72 [44] | 0.20 [5] | 1.53 [39] | 3.06 [78] | 0.88 [22] | 9/16 sq [14] | 1/8 or 1/4 | 8.40 oz 0.238 kg |
| Hole Diameter | | | | | | | | | | | |
| Panel Cut-out | Min. Inches (mm) | | Max. Inches (mm) | | Max. Panel Thickness (mm) | | | | | | |
| 2½" | 2.609 [66.3] | | 2.750 [69.9] | | 7/16 [11] | | | | | | |
| 3½" | 3.625 [92.1] | | 3.812 [96.8] | | 7/16 [11] | | | | | | |

Model 1001TH U-Clamp (UC)



1007P and 1001T XOR Refrigeration Pressure Gauges

DIMENSIONS in [] are millimeters

For reference only, consult Ashcroft for specific dimensional drawings

| Case 1007P | | | | | | | | |
|---------------------|----------------|--------------|---------------|-------------|---------------|------------------|----------------|---------------------|
| Dial Size Inches | A | B | C | D | E | F | G | Weight oz / kg |
| 2½" | 2.86 [72.5] | 1.14 [29] | 2.6 [65.9] | 0.9 [23] | 0.39 [9.9] | 9/16 sq. [14] | 2.18 [55.3] | 3.39 oz 0.096 kg |

Model - 1007P

