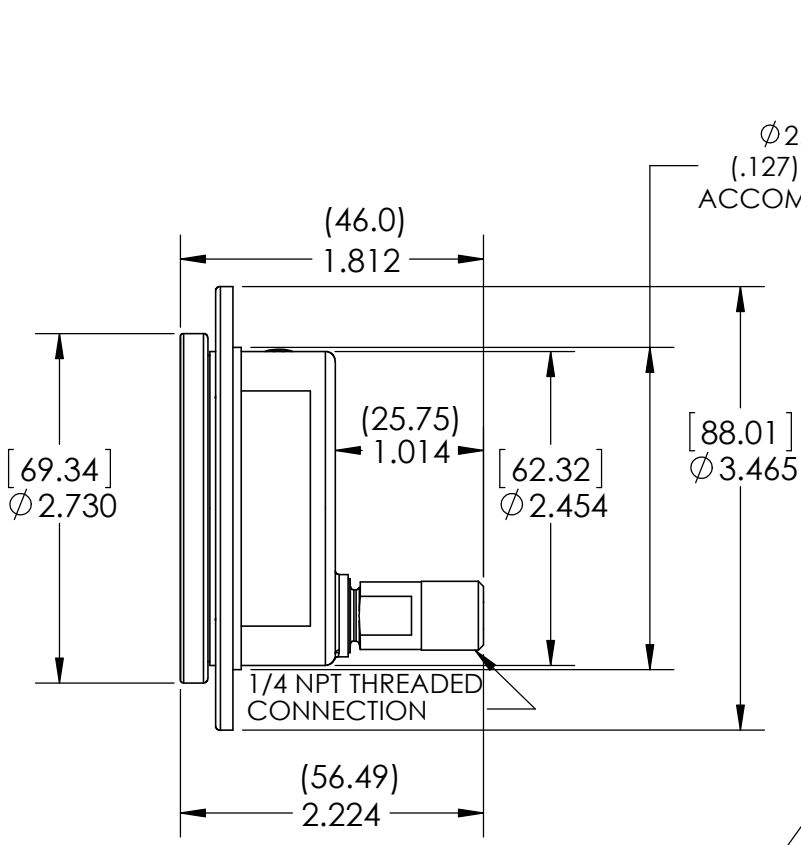
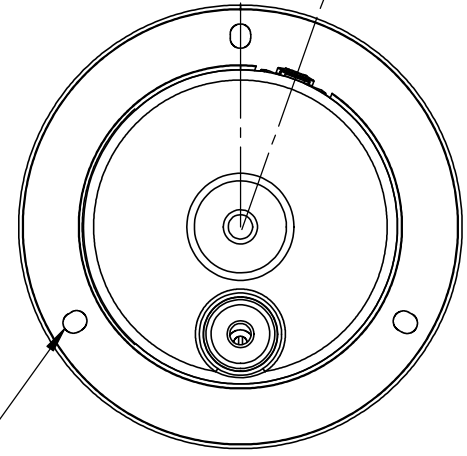




This drawing includes confidential information which is the property of ASHCROFT INC. This copy is loaned for a specific purpose, with the understanding that it will not be reproduced or used for any other purpose or disclosed to others, and it will be returned on demand.

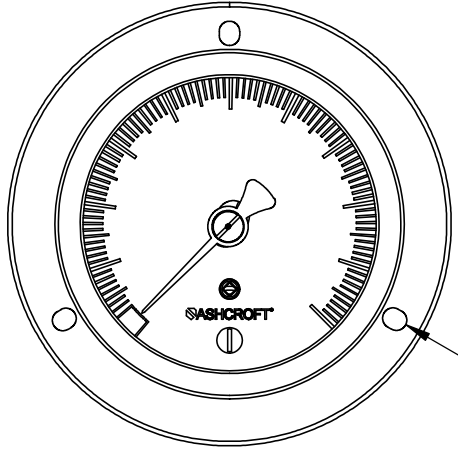


Ø 2.560 (65.02) ±.005
(.127) HOLE IN PANEL TO ACCOMODATE GAUGE CASE



REAR VIEW

(3) HOLES Ø .160 (4.06)
EQUALLY SPACED 120°
APART ON A Ø 2.950 (74.93)
±.005 (.127) B.C. (FOR BOTH
PANEL RING & PANEL)



FRONT VIEW

NOTE:
(3) HOLES IN PANEL RING
ARE SLIGHTLY ELONGATED
FOR INCREASED MANUVERABILITY
FOR MTG. SCREW(S) INSERTION

DIMENSIONS IN () ARE IN MILLIMETERS
DIMENSIONS ARE FOR REFERENCE ONLY

| REV. | ECO | DESCRIPTION | BY | DATE |
|------|------|--------------------------|----|----------|
| C | 6627 | REMOVED PANEL FROM VIEWS | WM | 8/5/2013 |

| | | | | | |
|---|------|---|--------------|----------------|----------|
| This print certified correct for Customer's Name | | GENERAL DIMENSIONS: TYPE 63-2008 PANEL GAUGE | | | |
| Customer's Order No. | | | | | |
| Ashcroft Order No. | | Checked WM | Date 3/27/13 | SHEET-1 | Rev. |
| Certified by | Date | Approved | Date | 70A3971 | C |