

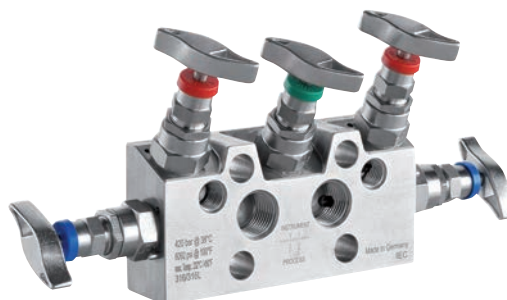
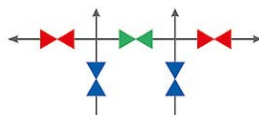
Direct and Remote Mount 5-Valve Manifolds - V02 Series

FEATURES

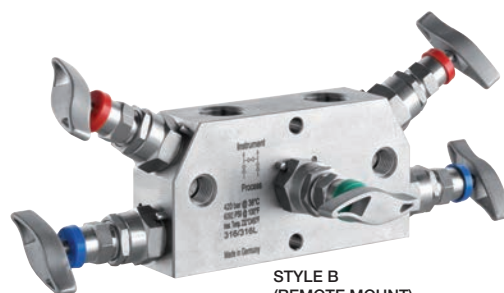
- 5-valve manifolds isolate and bleed the process for each port as well as equalize pressure for instrument maintenance
- 316L Stainless Steel Construction
- Support mounting brackets available

TYPICAL USES

- Oil & Gas Industry
 - Upstream: Onshore/offshore production
 - Midstream: Transport, storage and natural gas compression
 - Downstream: Refineries and petrochemical industries
- Chemical Industry
- Power Plants
 - Conventional power plants
 - Nuclear power plants
 - Flue gas desulfurization plants
- Other Industries
 - Waste incineration plants
 - Seawater desalination plants
 - Steel mills
 - Cement plants



STYLE A
(DIRECT MOUNT)*



STYLE B
(REMOTE MOUNT)

*Compatible with Ashcroft product type F5503 only

SPECIFICATIONS

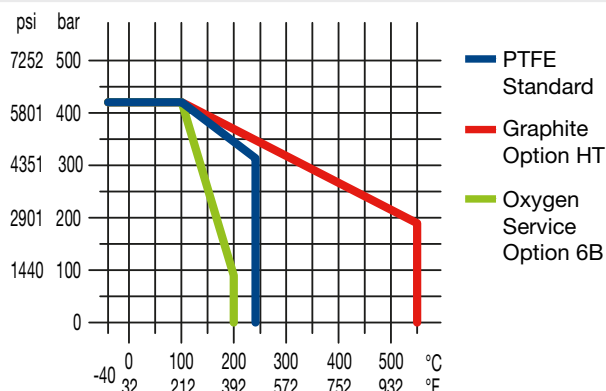
Process Connection:	½ NPT female
Instrument Connection:	Direct Mount: IEC, Type A Remote Mount: ½ NPT female
Construction:	316 Stainless Steel
Max. Pressure Rating	420 bar at 38 °C (6092 psi at 100 °F) more details, check chart below

Max. Temperature Rating for:

PTFE	232 °C (450 °F)
Graphite	550 °C (1.022 °F)
Oxygen service	200 °C (392 °F)

Min. Temperature Rating for:

PTFE	-40°C (-40 °F)
Graphite	-40°C (-40 °F)



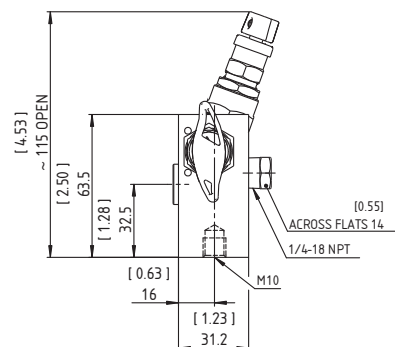
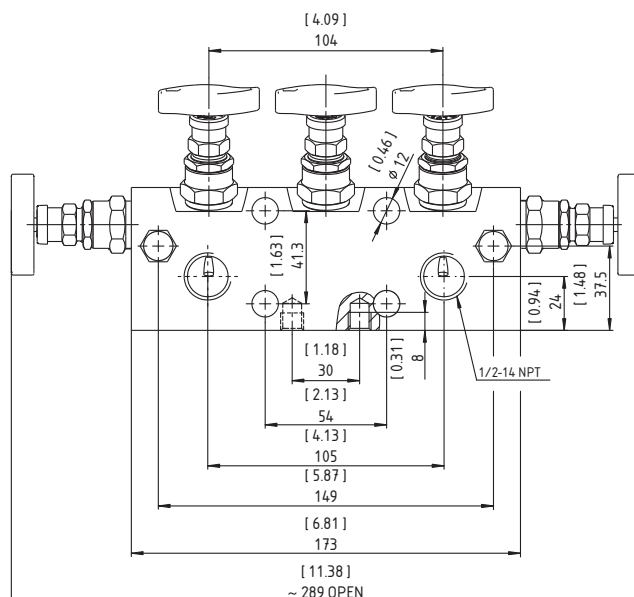
- Available for oxygen service
- Color-coded dust caps prevent dust ingress and identifies handle function
- PTFE Packing (other materials available upon request)
- Stem with cold rolled surface, back seat and non-rotating needle tip
- Supplied with wetted parts according to NACE MR0175/MR0103 (CD-5 Certificate)
- Material traceability reports available per EN 10204 3.1

COMPONENTS	MATERIAL
Wetted	
Body	1.4404 (316L)
Valve stem	1.4404 (316L)
Needle tip	1.4571 (316Ti)
Packing	PTFE up to 200 °C (390°F)
Gland nut	1.4401 (316)
Screw plug	1.4404 (316L)
Non-Wetted	
Bonnet	316 (1.4401)
T-handle	Stainless Steel

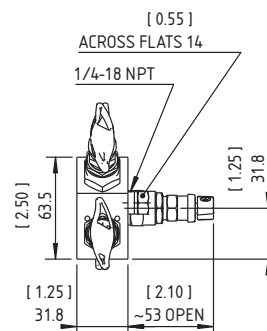
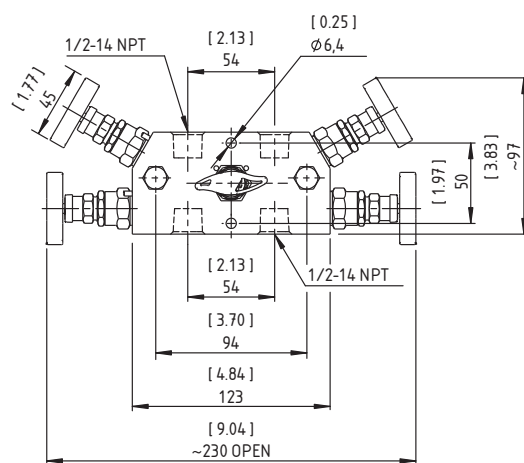
Direct and Remote Mount 5-Valve Manifolds - V02 Series

DIMENSIONS (DIMENSIONS IN [] ARE DECIMAL INCHES)

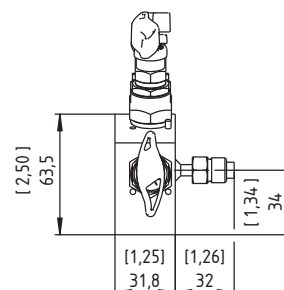
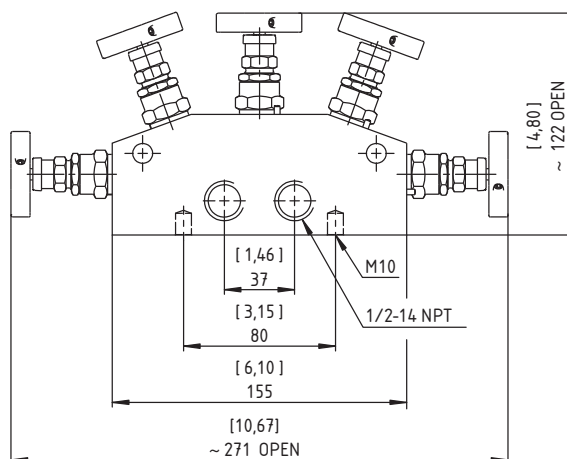
STYLE A



STYLE B



STYLE C

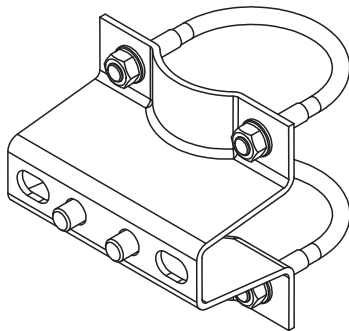
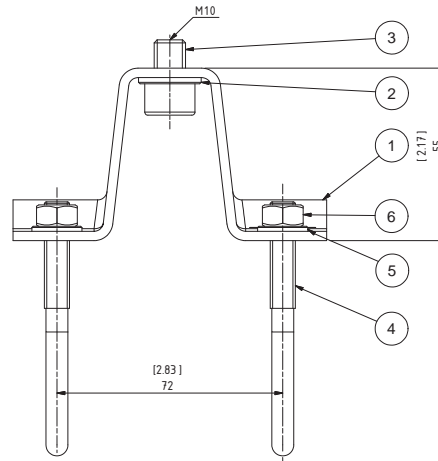
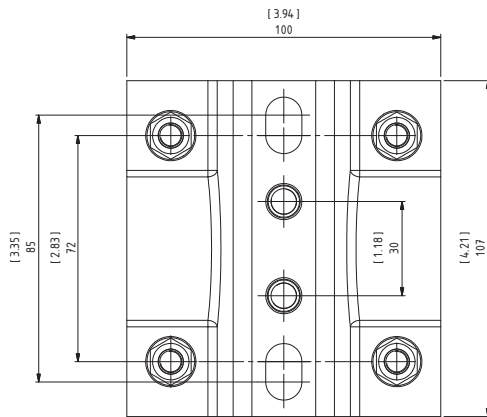


Data Sheet

Direct and Remote Mount 5-Valve Manifolds - V02 Series

DIMENSIONS (DIMENSIONS IN [] ARE DECIMAL INCHES)

OPTION TM - 2" PIPE MOUNTING BRACKET



Pos.	Description	Material
1	Mounting bracket	1.4404 (316L)
2	Washer 8,4 DIN 128-B	A4
3	Socket head cap screw ISO 4762 -M6x10	A4
4	U-bolt M8 for 2" pipe	A4
5	Washer 8,4 DIN 128-B	A4
6	Hexagon nut DIN EN 24032-M8	A4



Direct and Remote Mount 5-Valve Manifolds - V02 Series

ORDERING CODE Example		04	V02	5V	A	SS	50	C3
Process Connection								
(50)	½ NPT Female	04						
Series Code								
(V02)	Valve Series V02		V02					
Valves								
(5V)	5 Valve			5V				
Version								
(A)	Style A IEC 61518-A				A			
(B)	Style B							
(C)	Style C for differential pressure gauges with 37 mm ports							
Material								
(SS)	Stainless steel 1.4404 (316L)					SS		
(PM)	Monel 400 (2.4360)							
(HH)	Hastelloy C-276 (2.4819)							
Instrument Connection								
(50)	½ NPT Female (Style B only)						50	
(60)	ICE Type A (Style A only)							
(83)	G ¼ male swivel turning nipple (Style C only)							
Options								
(HT)	Graphite bonnet for high temperatures							
(TM)	2" Pipe mounting bracket (Style B only)							
(C3)	Material Traceability Report acc. to EN 10204 3.1							C3
(CD5)	Certificate according to NACE for Oilfields MR0175/ISO 15156-2009 and for Refineries MR0103-2010							
(MQ)	Positive Material Identification (PMI-Test)							
(HY)	Hydrostatic Testing							
(P7)	Power piping acc. to ASME B31.1							
(6B)	Cleaned for Oxygen Service							
(NH)	Stainless Steel Tags							

