

Direct and Remote Mount 3-Valve Manifolds - V02 Series

FEATURES

- 3-valve manifolds Isolates each port and equalizes pressure for instrument maintenance
- 1.4404 (316L) Stainless steel construction
- Support mounting brackets available

TYPICAL USES

- Oil & Gas Industry
 - Upstream: Onshore/offshore production
 - Midstream: Transport, storage and natural gas compression
 - Downstream: Refineries and petrochemical industries
- Chemical Industry
- Power Plants
 - Conventional power plants
 - Nuclear power plants
 - Flue gas desulfurization plants
- Other Industries
 - Waste incineration plants
 - Seawater desalination plants
 - Steel mills
 - Cement plants



STYLE A
(DIRECT MOUNT)*

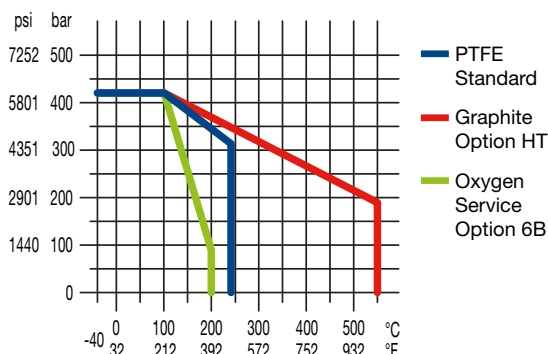


STYLE B
(REMOTE MOUNT)

*Compatible with Ashcroft product type F5503 only

SPECIFICATIONS

Process Connection:	½ NPT female
Instrument Connection:	Direct Mount: IEC, Type A Remote Mount: ½ NPT female
Construction:	316 Stainless Steel
Max. Pressure Rating	420 bar at 38 °C (6092 psi at 100 °F) more details, check chart below
Max. Temperature Rating for:	
PTFE	232 °C (450 °F)
Graphite	550 °C (1.022 °F)
Oxygen service	200 °C (392 °F)
Min. Temperature Rating for:	
PTFE	-40 °C (-40 °F)
Graphite	-40 °C (-40 °F)



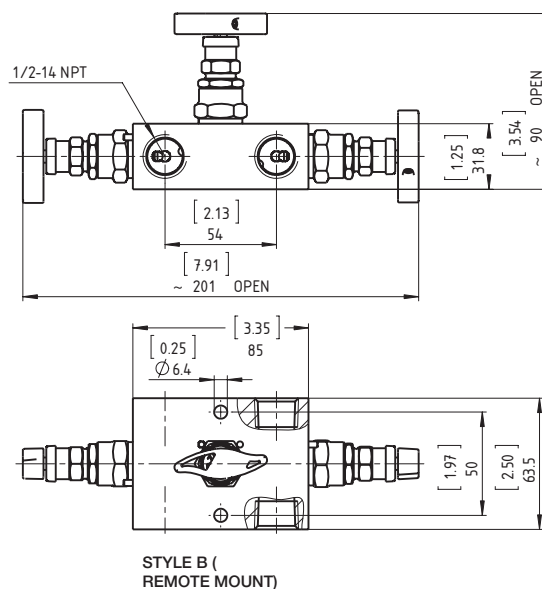
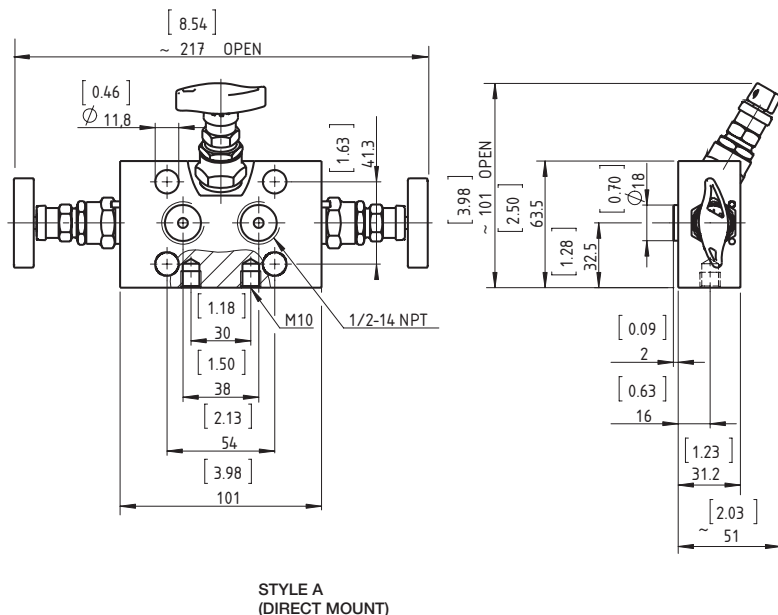
- Available for oxygen service
- Color-coded dust caps prevent dust ingress and identifies handle function
- PTFE Packing (other materials available upon request)
- Stem with cold rolled surface, back seat and non-rotating needle tip
- Supplied with wetted parts according to NACE MR0175/MR0103 (CD-5 Certificate)
- Material traceability reports available per EN 10204 3.1

COMPONENTS	MATERIAL
Wetted	
Body	1.4404 (316L)
Valve stem	1.4404 (316L)
Needle tip	1.4571 (316Ti)
Packing	PTFE or Graphite
Gland nut	1.4401 (316)
Non-Wetted	
Bonnet	316 (1.4401)
T-handle	Stainless Steel

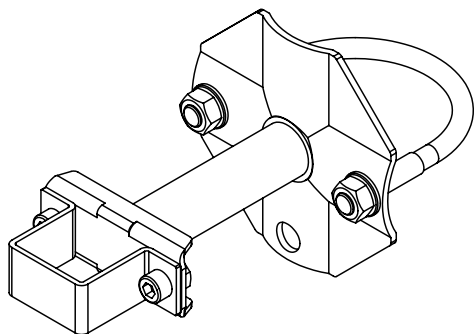
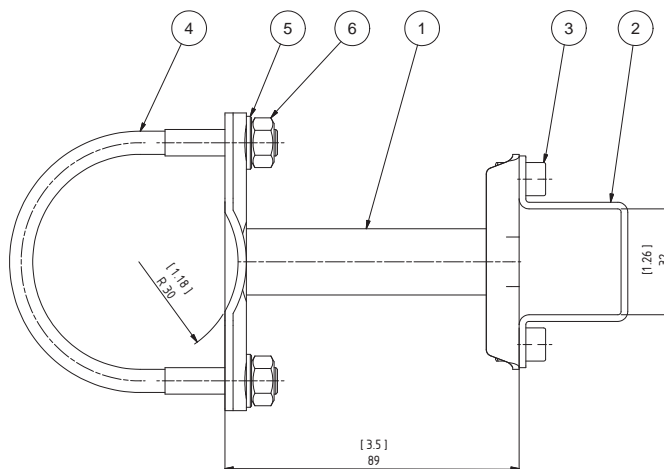
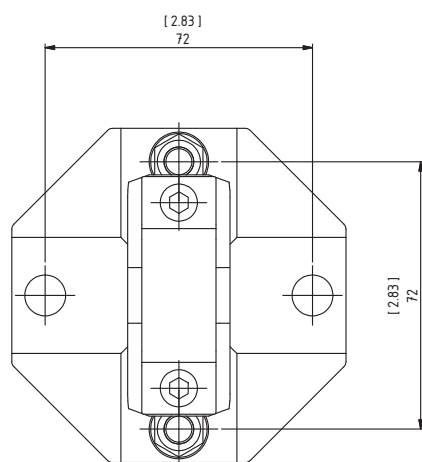
Data Sheet

Direct and Remote Mount 3-Valve Manifolds - V02 Series

DIMENSIONS (DIMENSIONS IN [] ARE DECIMAL INCHES)



OPTION TM - 2" PIPE MOUNTING BRACKET (DIMENSIONS IN [] ARE DECIMAL INCHES)



Pos.	Description	Material
1	Mounting bracket	1.4571 (316Ti)
2	Bracket	1.4571 (316Ti)
3	Socket head cap screw ISO 4762 -M6x10	A4
4	U-bolt M8 for 2" pipe	A4
5	Washer 8,4 DIN 128-B	A4
6	Hexagon nut DIN EN 24032-M8	A4



Direct and Remote Mount 3-Valve Manifolds - V02 Series

ORDERING CODE Example		50	V02	3V	A	SS	50	C3
Process Connection								
(50)	½ NPT Female	50						
Series Code								
(V02)	Valve Series V02		V02					
Valves								
(3V)	3 Valve			3V				
Version								
(A)	Style A IEC 61518-A				A			
(B)	Style B							
Material								
(SS)	Stainless steel 1.4404 (316L)					SS		
(PM)	Monel 400 (2.4360)							
(HH)	Hastelloy C-276 (2.4819)							
Instrument Connection								
(50)	½ NPT Female (Style B only)						50	
(60)	ICE Type A (Style A only)							
Options								
(HT)	Graphite bonnet for high temperatures							
(TM)	2" Pipe mounting bracket							
(C3)	Material Traceability Report acc. to EN 10204 3.1							C3
(CD5)	Certificate according to NACE for Oilfields MR0175/ISO 15156-2009 and for Refineries MR0103-2010							
(MQ)	Positive Material Identification (PMI-Test)							
(HY)	Hydrostatic Testing							
(P7)	Power piping acc. to ASME B31.1							
(6B)	Cleaned for Oxygen Service							
(NH)	Stainless Steel Tags							

