

Gauge Valve - V02 Series Block and Bleed Manifold

FEATURES

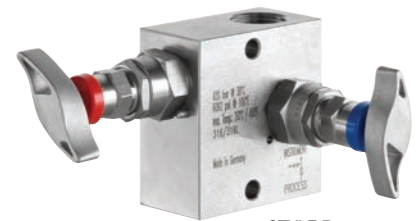
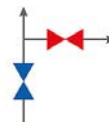
- Isolates and bleeds process from instrument assembly pressure for instrument maintenance
- 316L Stainless Steel construction
- Support mounting brackets available

TYPICAL USES

- Oil & Gas Industry
 - Upstream: Onshore/offshore production
 - Midstream: Transport, storage and natural gas compression
 - Downstream: Refineries and petrochemical industries
- Chemical Industry
- Power Plants
 - Conventional power plants
 - Nuclear power plants
 - Flue gas desulfurization plants
- Other Industries
 - Waste incineration plants
 - Seawater desalination plants
 - Steel mills
 - Cement plants



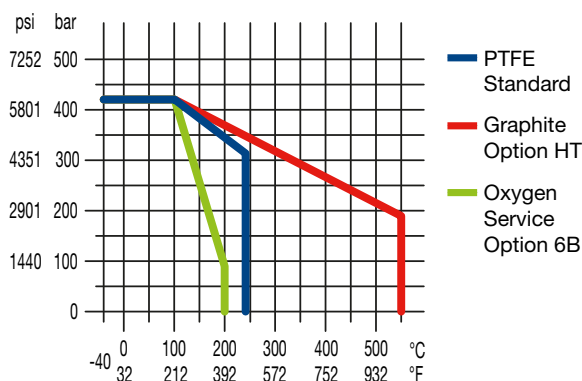
STYLE A
(INLINE)



STYLE B
(L-SHAPE)

SPECIFICATIONS

Process Connection:	Style A ½ NPT male Style B ½ NPT female Style C ½ NPT female
Instrument Connection:	½ NPT female
Construction:	316 Stainless Steel
Max. Pressure Rating	420 bar at 38 °C (6092 psi at 100 °F) more details, check chart below
Max. Temperature Rating for:	
PTFE	232 °C (450 °F)
Graphite	550 °C (1.022 °F)
Oxygen service	200 °C (392 °F)
Min. Temperature Rating for:	
PTFE	-40°C (-40 °F)
Graphite	-40°C (-40 °F)



- Available for oxygen service
- Color-coded dust caps prevent dust ingress and identifies handle function
- PTFE Packing (other materials available upon request)
- Stem with cold rolled surface, back seat and non-rotating needle tip
- Supplied with wetted parts according to NACE MR0175/MR0103 (CD-5 Certificate)
- Material traceability reports available per EN 10204 3.1

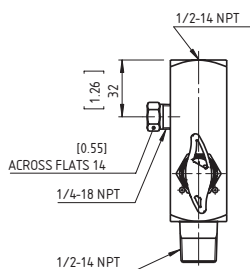
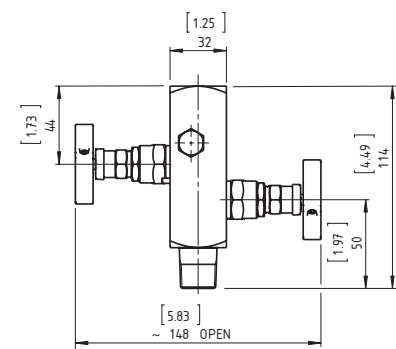
COMPONENTS	MATERIAL
Wetted	
Body	1.4404 (316L)
Valve stem	1.4404 (316L)
Needle tip	1.4571 (316Ti)
Packing	PTFE or Graphite
Gland nut	1.4301 (304)
Screw Plug	*1) 1.4404 (316L)
Non-Wetted	
Bonnet	316 (1.4401)
T-handle	Stainless Steel

*1) Style B, C only

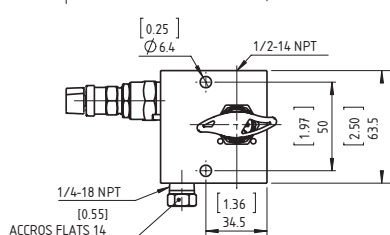
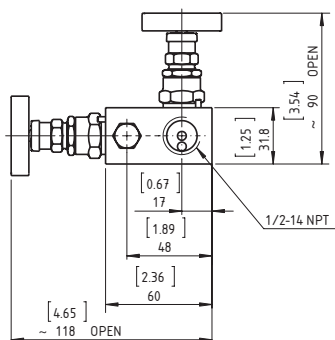
Data Sheet

Gauge Valve - V02 Series Block and Bleed Manifold

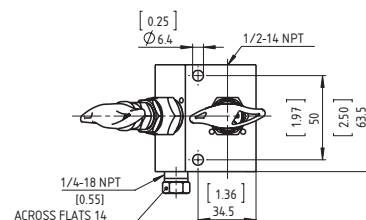
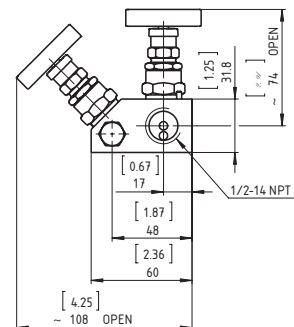
DIMENSIONS (DIMENSIONS IN [] ARE DECIMAL INCHES)



Style A (In-line)

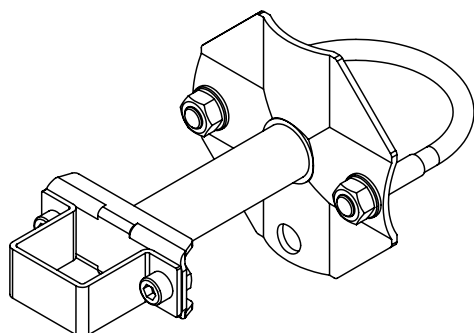
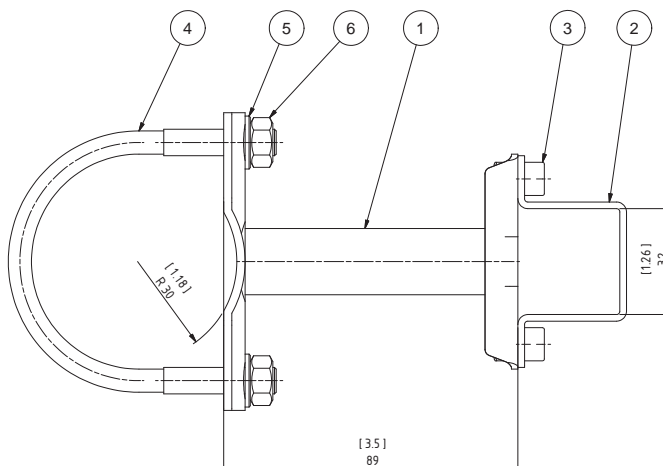
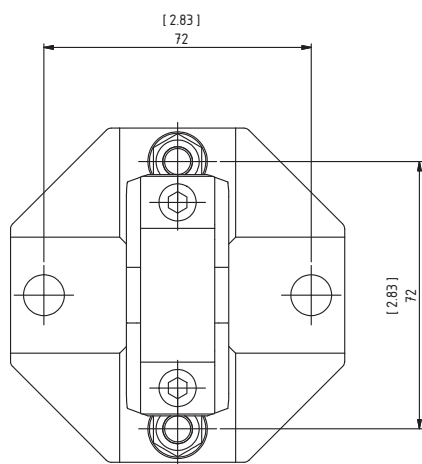


Style B (L-Shape)



Style C (Y-Shape)

OPTION TM - 2" PIPE MOUNTING BRACKET (DIMENSIONS IN [] ARE DECIMAL INCHES)



Pos.	Description	Material
1	Mounting bracket	1.4571 (316Ti)
2	Bracket	1.4571 (316Ti)
3	Socket head cap screw ISO 4762 -M6x10	A4
4	U-bolt M8 for 2" pipe	A4
5	Washer 8,4 DIN 128-B	A4
6	Hexagon nut DIN EN 24032-M8	A4



Gauge Valve - V02 Series

Block and Bleed Manifold

ORDERING CODE Example		04	V02	2V	A	SS	50	C3
Process Connection								
(04)	½ NPT Male (Style A only)	04						
(06)	¾ NPT Male (Style A only)							
(25)	¼ NPT Female							
(50)	½ NPT Female							
Series Code			V02					
(V02)	Valve Series V02		V02					
Valves								
(2V)	2 Valve			2V				
Version								
(A)	Style A (In-line)				A			
(B)	Style B (L-Shape)							
(C)	Style C (Y-Shape)							
Material								
(SS)	Stainless steel 1.4404 (316L)					SS		
(PM)	Monel 400 (2.4360)							
(HH)	Hastelloy C-276							
Instrument Connection								
(04)	½ NPT Male (Style A only)							
(25)	¼ NPT Female							
(50)	½ NPT Female						50	
Options								
(HT)	Graphite bonnet for high temperature							
(TM)	2" Pipe mounting bracket							
(C3)	Material Traceability Report acc. to EN 10204 3.1							C3
(CD5)	Certificate according to NACE for Oilfields MR0175/ISO 15156-2009 and for Refineries MR0103-2010							
(HY)	Hydrostatic Testing							
(P7)	Power piping acc. to ASME B31.1							
(PN700)	High pressure (10.000 psi / 689 bar)							
(6B)	Cleaned for Oxygen Service							
(NH)	Stainless Steel Tags							

