

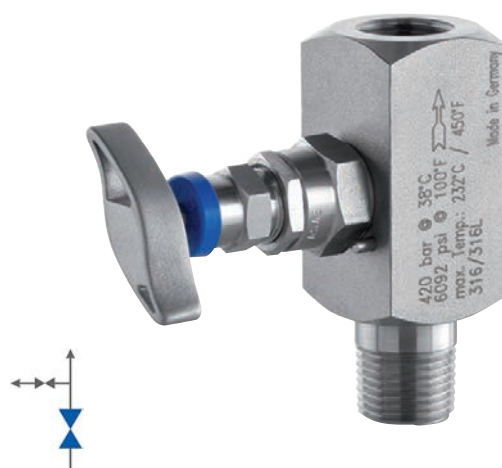
## Gauge Valve - V02 Series

### FEATURES

- Isolates process from instrument assembly
- 1.4404 (316L) Stainless Steel construction

### TYPICAL USES

- Oil & Gas Industry
  - Upstream: Onshore/offshore production
  - Midstream: Transport, storage and natural gas compression
  - Downstream: Refineries and petrochemical industries
- Chemical Industry
- Power Plants
  - Conventional power plants
  - Nuclear power plants
  - Flue gas desulfurization plants
- Other Industries
  - Waste incineration plants
  - Seawater desalination plants
  - Steel mills
  - Cement plants



### SPECIFICATIONS

Process Connection:	½ NPT Male, ½ NPT Female
Instrument Connection:	½ NPT Female
Construction:	316 Stainless Steel
Max. Pressure Rating	420 bar at 38 °C (6092 psi at 100 °F) more details, check chart below

#### Max. Temperature Rating for:

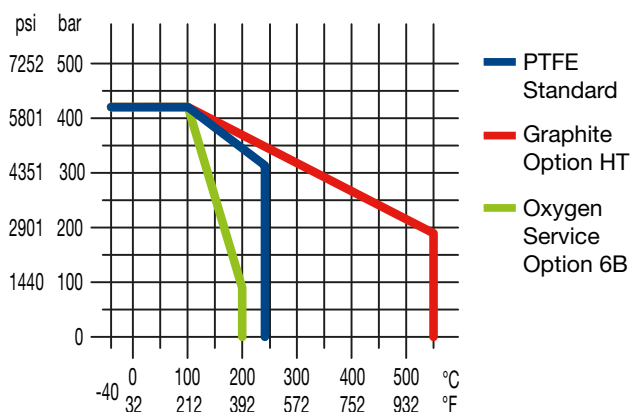
PTFE	232 °C ( 450 °F)
Graphite	550 °C (1.022 °F)
Oxygen service	200 °C (392 °F)

#### Min. Temperature Rating for:

PTFE	-40°C (-40 °F)
Graphite	-40°C (-40 °F)

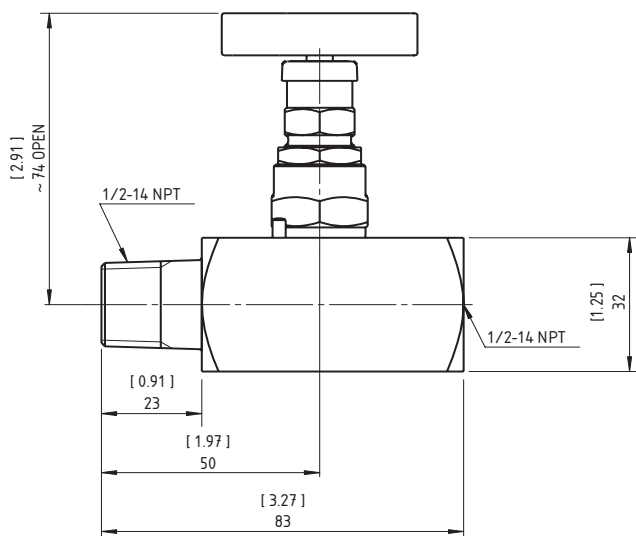
- Available for oxygen service
- Color-coded dust caps prevent dust ingress and identifies handle function
- PTFE Packing (other materials available upon request)
- Stem with cold rolled surface, back seat and non-rotating needle tip
- Supplied with wetted parts according to NACE MR0175/MR0103 (CD-5 Certificate)
- Material traceability reports available per EN 10204 3.1

COMPONENTS	MATERIAL
<b>Wetted</b>	
Body	1.4404 (316L)
Valve stem	1.4404 (316L)
Needle tip	1.4571 (316Ti)
Packing	PTFE or Graphite
Gland nut	1.4301 (304)
<b>Non-Wetted</b>	
Bonnet	316 (1.4401)
T-handle	316 (1.4401)

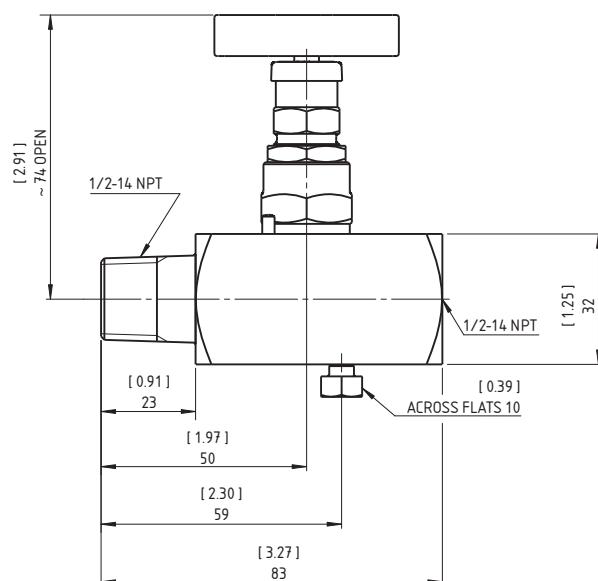


## Gauge Valve - V02 Series

### DIMENSIONS (DIMENSIONS IN [ ] ARE DECIMAL INCHES)

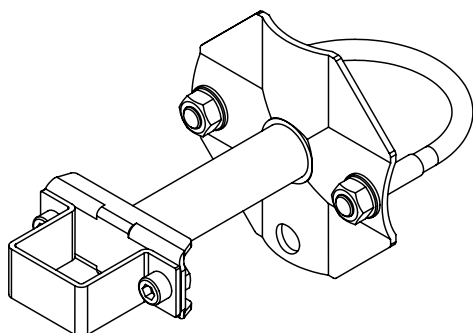
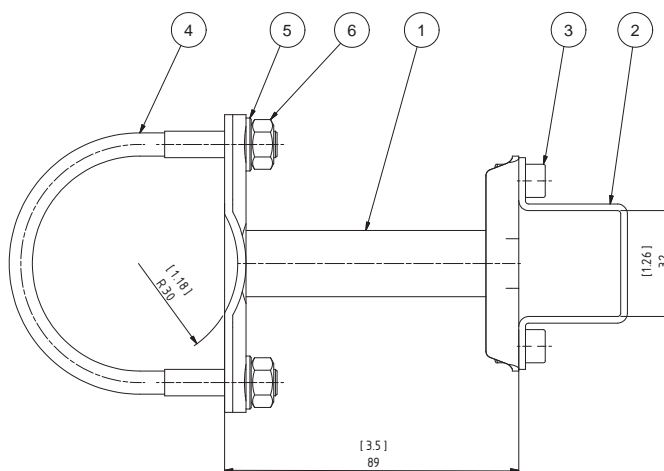
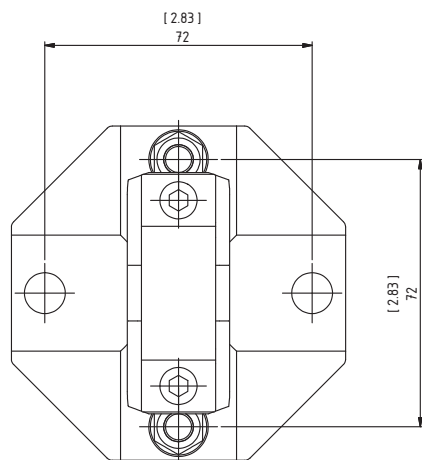


Style A



Style B

### OPTION TM - 2" PIPE MOUNTING BRACKET (DIMENSIONS IN [ ] ARE DECIMAL INCHES)



Pos.	Description	Material
1	Mounting bracket	1.4571 (316Ti)
2	Bracket	1.4571 (316Ti)
3	Socket head cap screw ISO 4762 -M6x10	A4
4	U-bolt M8 for 2" pipe	A4
5	Washer 8,4 DIN 128-B	A4
6	Hexagon nut DIN EN 24032-M8	A4



## Gauge Valve - V02 Series

ORDERING CODE Example		04	V02	1V	A	SS	50	HT
<b>Process Connection</b>								
(04)	½ NPT Male (style A only)	04						
(50)	½ NPT Female							
<b>Series Code</b>								
(V02)	Valve Series V02		V02					
<b>Valves</b>								
(1V)	1 Valve			1V				
<b>Version</b>								
(A)	Style A				A			
(B)	Style B (with vent screw)							
<b>Material</b>								
(SS)	Stainless steel 1.4404 (316L)					SS		
(PM)	Monel 400 (2.4360)							
(HH)	Hastelloy C-276							
<b>Instrument Connection</b>								
(25)	¼ NPT Female							
(50)	½ NPT Female						50	
<b>Options</b>								
(HT)	Graphite bonnet for high temperature							HT
(TM)	Pipe mounting bracket							
(C3)	Material Traceability Report acc. to EN 10204 3.1							
(CD5)	Certificate according to NACE for Oilfields MR0175/ISO 15156-2009 and for Refineries MR0103-2010							
(HY)	Hydrostatic Testing							
(P7)	Power piping acc. to ASME B31.1							
(PN700)	High pressure (10.000 psi / 689 bar)							
(6B)	Cleaned for Oxygen Service							
(NH)	Stainless Steel Tags							

