

Utility gauge complete stainless steel Type UG4

FEATURES

- Cost-effective construction
- Stainless steel case and wetted components welded
- Dampened Movement
- 40, 50, 63, 80 and 100 mm dial size
- Overload protection 120 %
- Accuracy Class 1, 1.6 or 2.5

TYPICAL USES

- Pumps and compressors
- Filter regulators
- Fluid power equipments
- Medical equipment
- Pool and spa filters
- Hydraulics and pneumatics
- OEM equipment & Industrial machinery
- Beverage dispensing equipment



UG4
Stainless steel case



SPECIFICATIONS

| | |
|------------------------------|--|
| Model: | UG4 with stainless steel case |
| Accuracy: | According to EN 837-1 100 mm dial size Class 1; 1 % Full scale 63 and 80 mm, optional 50 mm dial size Class 1.6; 1.6 % Full scale 40 and 50 mm dial size Class 2.5; 2.5 % Full scale |
| Dial Sizes: | 40, 50, 63, 80 and 100 mm |
| Ranges: | Vacuum, compound, 0 to 690 bar (10000 psi) |
| Working Pressure: | 75 % of max. scale value |
| Over Pressure Limit: | 120 % of max. scale value |
| Process Connection: | 1/8 NPT, G 1/8 B, R 1/8 male 1/4 NPT, G 1/4 B, R 1/4 male 1/2 NPT, G 1/2 B, R 1/2 male |
| Process Connection Location: | Lower or center back or lower back |
| Weather Protection | IP66 |

WETTED COMPONENTS

| | |
|---------|-------------------------------|
| Tube: | Stainless steel 316L (1.4404) |
| Socket: | Stainless steel 316L (1.4404) |
| Joints: | Welded |

NON-WETTED COMPONENTS

| | |
|-----------|--|
| Window: | Acrylic glass |
| Gasket: | NBR |
| Dial: | Aluminum, black markings on white background |
| Pointer: | Black, aluminum |
| Movement: | Stainless steel 304 (1.4301) |
| Case: | Stainless steel 304 (1.4301) |

KEY BENEFITS

- Economic pressure measurement
- Suitable for oxygen service
- Dampened movement
- Helium leak tested

MIN./MAX. TEMPERATURE LIMITS

| VERSION | AMBIENT | PROCESS | STORAGE |
|-----------|--------------------------------------|--------------------------------------|--------------------------------------|
| Dry | -20 °C to 65 °C (-4 °F to 150 °F) | max. 200 °C (max. 392 °F) | -20 °C to 65 °C (-4 °F to 150 °F) |
| Glycerine | -7 °C to 65 °C (19 °F to 150 °F) | -7 °C to 65 °C (19 °F to 150 °F) | -7 °C to 65 °C (19 °F to 150 °F) |
| Silicone | -20 °C to 65 °C (-4 °F to 150 °F) | -20 °C to 65 °C (-4 °F to 150 °F) | -20 °C to 65 °C (-4 °F to 150 °F) |

Data Sheet

Utility gauge complete stainless steel Type UG4

| ORDERING CODE | | EXAMPLE: 63 UG4 S A D 01 L S 0 L 6BR XCD2 | | | | | | | | | | | |
|---|---|---|--|---|---|---|----|---|---|---|---|-----|-----|
| Dial Size | | | | | | | | | | | | | |
| 40 | 40 mm | | | | | | | | | | | | |
| 50 | 50 mm | | | | | | | | | | | | |
| 63 | 63 mm | 63 | | | | | | | | | | | |
| 80 | 80 mm | | | | | | | | | | | | |
| 100 | 100 mm | | | | | | | | | | | | |
| Model Code | | | | | | | | | | | | | |
| UG4 | Utility gauge type 4 | UG4 | | | | | | | | | | | |
| Wetted components (Tube and socket) | | | | | | | | | | | | | |
| S | Stainless steel | | | S | | | | | | | | | |
| Case Material | | | | | | | | | | | | | |
| A | Stainless steel | | | | A | | | | | | | | |
| Case Filling | | | | | | | | | | | | | |
| D | Dry | | | | | D | | | | | | | |
| S | Silicone | | | | | | | | | | | | |
| G | Glycerine | | | | | | | | | | | | |
| Process Connection | | | | | | | | | | | | | |
| 01 | 1/8 NPT Male | | | | | | 01 | | | | | | |
| 02 | 1/4 NPT Male | | | | | | | | | | | | |
| 04 | 1/2 NPT Male | | | | | | | | | | | | |
| 07 | G 1/8 B Male | | | | | | | | | | | | |
| 13 | G 1/4 B Male | | | | | | | | | | | | |
| 15 | G 1/2 B Male | | | | | | | | | | | | |
| 17 | R 1/8 DIN EN 10226-1:2004-10 [1/8" BSPT (JIS B 0203)] | | | | | | | | | | | | |
| KA | R 1/4 DIN EN 10226-1:2004-10 [1/4" BSPT (JIS B 0203)] | | | | | | | | | | | | |
| KQ | R 1/2 DIN EN 10226-1:2004-10 [1/2" BSPT (JIS B 0203)] | | | | | | | | | | | | |
| Process Connection Location | | | | | | | | | | | | | |
| B | Lower back (only admissible for ≥ 63 mm) | | | | | | | | | | | | |
| C | Center back | | | | | | | | | | | | |
| L | Lower | | | | | | | L | | | | | |
| Window | | | | | | | | | | | | | |
| S | Laminated safety glass | | | | | | | | S | | | | |
| A | Acrylic glass | | | | | | | | | | | | |
| Mounting | | | | | | | | | | | | | |
| 0 | Stem | | | | | | | | | 0 | | | |
| 1 | U-clamp (only admissible for ≥ 63 mm) | | | | | | | | | | | | |
| 2 | Front flange (only admissible for ≥ 63 mm) | | | | | | | | | | | | |
| 3 | Wall mounting bracket | | | | | | | | | | | | |
| Accuracy | | | | | | | | | | | | | |
| I | Class 2.5 | | | | | | | | | | | | |
| J | Class 1 | | | | | | | | | | | | |
| L | Class 1.6 | | | | | | | | | | L | | |
| Range (coding example only, find available ranges on page 3) | | | | | | | | | | | | | |
| Single Scales | | | | | | | | | | | | | |
| 6BR | 6 bar | | | | | | | | | | | 6BR | |
| Options (If choosing an option(s) must include a "X") | | | | | | | | | | | | | |
| Dial | | | | | | | | | | | | | |
| SS | Special range (Information is required by the customer) | | | | | | | | | | | | |
| Connection | | | | | | | | | | | | | |
| TU | Throttle plug | | | | | | | | | | | | |
| Cleaning | | | | | | | | | | | | | |
| 6B | Cleaned for oxygen service | | | | | | | | | | | | |
| YF | Cleaned silicone free | | | | | | | | | | | | |
| Testing/Certificates | | | | | | | | | | | | | |
| CD2 | Material test report according to EN 10204 / 2.2 | | | | | | | | | | | | CD2 |

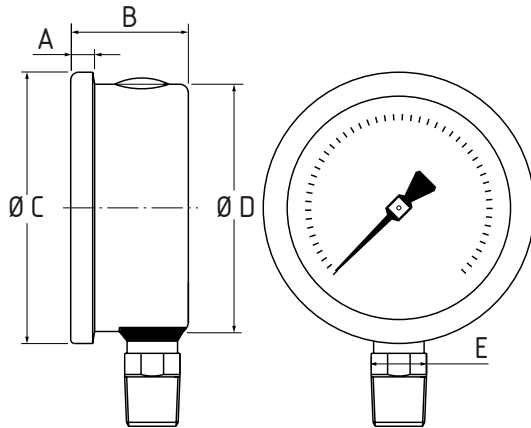


Data Sheet

Utility gauge complete stainless steel Type UG4

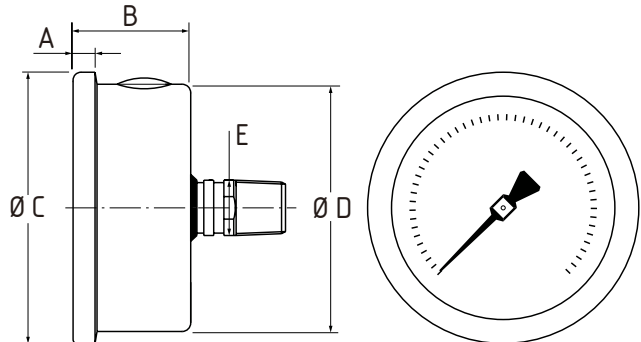
DIMENSIONS IN MM [INCH]

For reference only, consult Ashcroft for specific dimensional drawings



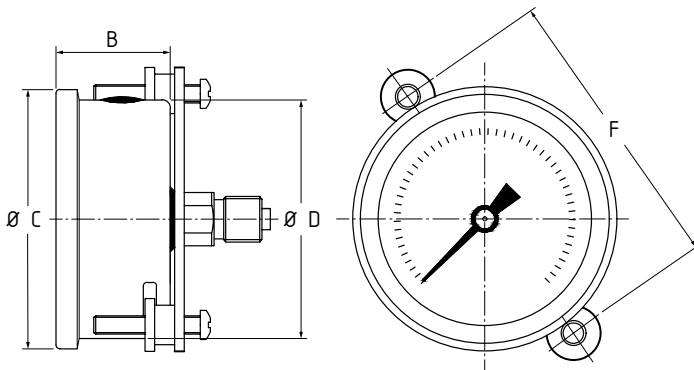
LOWER CONNECTION TYPE

| DIAL SIZE | A | B | ØC | ØD | E | WEIGHT (KG) |
|-----------|--------------|---------------|----------------|---------------|----------------|-------------|
| 40 mm | 5,1 [0,2] | 25,4 [1] | 45,7 [1,8] | 40,6 [1,6] | 10,9 [0,43] | 0,1 |
| 50 mm | 5,1 [0,2] | 30,5 [1,2] | 55,9 [2,2] | 50,8 [2] | 14 [0,55] | 0,1 |
| 63 mm | 7,6 [0,3] | 30,5 [1,2] | 68,6 [2,7] | 61 [2,4] | 14 [0,55] | 0,2 |
| 80 mm | 7,6 [0,3] | 35,6 [1,4] | 86,4 [3,4] | 78,7 [3,1] | 17 [0,67] | 0,3 |
| 100 mm | 7,6 [0,3] | 48,3 [1,9] | 109,2 [4,3] | 99,1 [3,9] | 22,1 [0,87] | 0,6 |



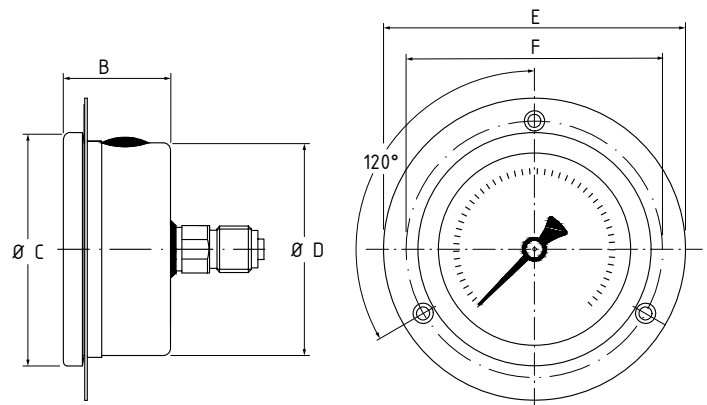
CENTER BACK CONNECTION TYPE

| DIAL SIZE | A | B | ØC | ØD | E | WEIGHT (KG) |
|-----------|--------------|---------------|---------------|---------------|----------------|-------------|
| 40 mm | 5,1 [0,2] | 25,4 [1] | 45,7 [1,8] | 40,6 [1,6] | 10,9 [0,43] | 0,1 |
| 50 mm | 5,1 [0,2] | 30,5 [1,2] | 55,9 [2,2] | 50,8 [2] | 14 [0,55] | 0,1 |
| 63 mm | 7,6 [0,3] | 30,5 [1,2] | 68,6 [2,7] | 61 [2,4] | 14 [0,55] | 0,2 |
| 80 mm | 7,6 [0,3] | 35,6 [1,4] | 86,4 [3,4] | 78,7 [3,1] | 17 [0,67] | 0,3 |



CENTER BACK CONNECTION TYPE (U-CLAMP)

| DIAL SIZE | B | ØC | ØD | F | WEIGHT (KG) |
|-----------|---------------|---------------|-------------|--------------|-------------|
| 40 mm | 25,4 [1] | 46,6 [1,8] | 40 [1,6] | 48 [1,9] | 0,2 |
| 50 mm | 29,5 [1,2] | 57 [2,2] | 51,8 [2] | 60 [2,4] | 0,2 |
| 63 mm | 31 [1,2] | 68 [2,7] | 62 [2,4] | 72 [2,8] | 0,2 |
| 80 mm | 31 [1,2] | 87 [3,4] | 80 [3,1] | 87 [3,4] | 0,3 |
| 100 mm | 36,5 [1,4] | 109 [4,3] | 99 [3,9] | 124 [4,9] | 0,6 |



CENTER BACK CONNECTION TYPE (U-CLAMP)

| DIAL SIZE | B | ØC | ØD | E | F | 3X BORE | WEIGHT (KG) |
|-----------|-------------|--------------|--------------|--------------|--------------|-----------|-------------|
| 40 mm | 26 [1] | 47 [1,9] | 40 [1,6] | 64 [2,5] | 53 [2,1] | 3,7 [0,1] | 0,2 |
| 50 mm | 30 [1,2] | 57 [2,2] | 52 [2] | 74 [2,9] | 64 [2,5] | 3,8 [0,1] | 0,2 |
| 63 mm | 31 [1,2] | 68 [2,7] | 62 [2,4] | 88 [3,5] | 75 [3] | 3,8 [0,1] | 0,2 |
| 80 mm | 31 [1,2] | 87 [3,4] | 80 [3,1] | 108 [4,3] | 95 [3,7] | 3,8 [0,1] | 0,3 |
| 100 mm | 47 [1,9] | 109 [4,3] | 100 [3,9] | 133 [5,2] | 117 [4,6] | 5 [0,2] | 0,6 |



Data Sheet

Utility gauge complete stainless steel Type UG4

| STANDARD PRESSURE RANGE | | | | | | | |
|-------------------------|-----|------|-------|-------|-------|-------------------|--------------|
| Gauge Pressure | | | | | | Vacuum & Compound | |
| bar | | psi | | kPa | | bar | in. HG / psi |
| Code | | | | | | | |
| BR | | # | | KP | | BR | INHG |
| 1 | 160 | 15 | 1500 | 100 | 16000 | -1/0 | -30/0 |
| 1,6 | 250 | 30 | 2000 | 160 | 25000 | -1/0,6 | -30/15 |
| 2,5 | 400 | 60 | 3000 | 250 | 40000 | -1/1,5 | -30/30 |
| 4 | 600 | 100 | 4000 | 400 | 60000 | -1/3 | -30/60 |
| 6 | | 160 | 5000 | 600 | | -1/5 | -30/100 |
| 10 | | 200 | 6000 | 1000 | | -1/9 | -30/160 |
| 16 | | 300 | 7500 | 1600 | | -1/15 | -30/200 |
| 25 | | 400 | 10000 | 2500 | | -1/24 | -30/300 |
| 40 | | 500 | | 4000 | | | |
| 60 | | 600 | | 6000 | | | |
| 100 | | 800 | | 10000 | | | |
| | | 1000 | | | | | |

