

Data Sheet

All stainless steel high pressure process gauge solid front

Model T6500W

According to EN837-1 or DIN 16001

FEATURES

- High pressure up to 4000 bar (60000 psi)
- Solid front all welded stainless steel case
- 100 mm and 160 mm case size
- Weatherproof protection IP66/IP67 (NEMA 4X) rating
- ATEX approval CE Ex II 2 GD c
- Dry, liquid filled or **PLUS!™** Performance option

TYPICAL USES

- Water jet based cutting & cleaning
- High pressure chemical & petrochemical applications
- Pressure burst testing



T6500W
100 mm



SPECIFICATIONS

Accuracy:	Class 1; 1 % Full scale
Sizes:	100 mm or 160 mm
Ranges:	0 to 1600 bar up to 4000 bar 0 to 23200 psi up to 60000 psi and others
Process Connection Location:	Lower
Process Connection Size:	9/16-18 UNF-2B right or left handed thread M16 x 1,5 female
Case Style:	Solid front with full rear blowout back
Movement:	Adjustable
Window Material:	Safety glass or polycarbonate
Dial:	Aluminum, white background, black figures and intervals
Pointer:	Aluminum
Weather Protection:	Dry: IP66 and NEMA 4X Liquid filled: IP66/67 and NEMA 4X Hermetically sealed case: IP66/67 and NEMA 4X
Dampening Options:	PLUS!™ Performance, throttle rod and fill fluids
Mounting:	Stem and surface
Approvals:	ATEX II 2 GD c IIC Tx for hazardous areas (File No. 35134582 at notified body 0044, TÜV NORD CERT) CE (Conformité Européenne) EAC (EurAsian Conformity)
Weight:	100 mm: 0,9 kg (dry), 1,2 kg (liquid filled) 160 mm: 1,2 kg (dry), 2,0 kg (liquid filled)

WETTED COMPONENTS

Bourdon Tube	Process Connection	Joints
Inconel 718 (2.4668)	316L (1.4404) St.st.	Welded

KEY BENEFITS

- High pressure measuring capacity
- Compliant to DIN 16001
- Customized dial artwork available

Non-WETTED COMPONENTS

Case	Ring	Back Cover
304 (1.4301) St.st.	304 (1.4301) St.st.	304 (1.4301) St.st.
optional: 316L (1.4404) St.st.	optional: 316L (1.4404) St.st.	optional: 316L (1.4404) St.st.

MIN./MAX. TEMPERATURE LIMITS

VERSION	AMBIENT	PROCESS	STORAGE
Dry	-40 °C bis 70 °C (-40 °F bis 158 °F)	-40 °C bis 200 °C (-40 °F bis 392 °F)	-40 °C bis 70 °C (-40 °F bis 158 °F)
PLUS!™	-40 °C bis 70 °C (-40 °F bis 158 °F)	-40 °C bis 93 °C (-40 °F bis 200 °F)	-40 °C bis 70 °C (-40 °F bis 158 °F)
Glycerine	-7 °C bis 70 °C (19 °F bis 158 °F)	-7 °C bis 70 °C (19 °F bis 158 °F)	-20 °C bis 70 °C (-4 °F bis 158 °F)
Silicone	-40 °C bis 70 °C (-40 °F bis 158 °F)	-40 °C bis 93 °C (-40 °F bis 200 °F)	-40 °C bis 70 °C (-40 °F bis 158 °F)
Halocarbon®	-40 °C bis 70 °C (-40 °F bis 158 °F)	-40 °C bis 93 °C (-40 °F bis 200 °F)	-40 °C bis 70 °C (-40 °F bis 158 °F)
ATEX	-40 °C bis 60 °C (-40 °F bis 140 °F)	according Tx and limit of liquid filling	-40 °C bis 60 °C (-40 °F bis 140 °F)

PRESSURE RANGE TABLE

(in bar or kg/cm ²)	(in psi)	more ranges on request
1600	25000	
2000	30000	
2500	45000	
4000	60000	

Data Sheet

All stainless steel high pressure process gauge solid front Model T6500W

ORDERING CODE		EXAMPLE:	100	T6500	W	D	09	L	1600	BR	X	C3
Dial Size												
100	100 mm		10									
160	160 mm											
Model												
T6500	Solid front stainless steel pressure gauge			T6500								
Wetted Parts Material												
W	Inconel 718 (2.4668) tube and 316L (1.4404) socket				WS							
Case Filling												
D	Dry case					D						
L	Liquid filled case											
Process Connection												
09	9/16-18 UNF-2B Aminco right handed						09					
29	9/16-18 UNF-2B Aminco left handed											
54	M16 x 1,5 female											
Connection Location												
L	Lower							L				
Range												
See table RANGES									10			
Engineering Unit												
BR	Engineering Unit other engineering units available, check range table									BR		
Additional Options												
X	see next page										X	
Agency Approval												
ATEX	ATEX approval Ex II 2 GD c IIC Tx											
EAC	Custom declaration according Eurasian Conformity											
Case Material												
YW	Case and ring material stainless steel 316L											
Case And Ring												
FW	Wall mounting flange											
FX	Front flange tack welded to case											
Connection												
TS	Throttle rod											
WP	No throttle in dry or liquid filled cases											
Liquid filling												
GQ	White oil											
GR	Glycerine 99,5%											
GV	Silicone											
LJ	Field fillable											



Data Sheet

All stainless steel high pressure process gauge solid front Model T6500W

ORDERING CODE **EXAMPLE:** 100 T6500 W D 15 L 1600 BR XC3

Dial options

CS	Combination range / Dual scale
E6	Dial pin in 6 o'clock position
SS	Special Scale <i>(Information is required by the customer)</i>

Movement

LL	PLUS! ™ Performance
NZ	PLUS! ™ Performance silicone free <i>(Not for execution L (liquid filled))</i>

Pointer

MP	Adjustable micrometer pointer
----	-------------------------------

Window

PD	Polycarbonate window
EP	Maximum pointer and polycarbonate window
EQ	Minimum Pointer and polycarbonate window
SH	Red set hand stationary and polycarbonate window
D3	DuraVis™ Retroreflective Dial (100 mm and dry case only)

Material Origin

WO	Western origin of all wetted parts
----	------------------------------------

Cleaning

6W	Cleaned "free of oil and grease" <i>(no Oxygen service)</i>
YF	Cleaned silicone free product

Marking And Tagging

DA	Dial marking printed on dial <i>(Information is required by the customer)</i>
NH	Stainless steel tagging wired <i>(Information is required by the customer)</i>
NH1	Extra lage stainless steel tagging, wired (120 x 30 x 1 mm) <i>(Information is required by the customer)</i>

Material Certificate

CD2	Certificate according to EN 10204 2.2
C3	Certificate according to EN 10204 3.1
MQ	Positive material certificate (PMI)

C3

Test Certificate

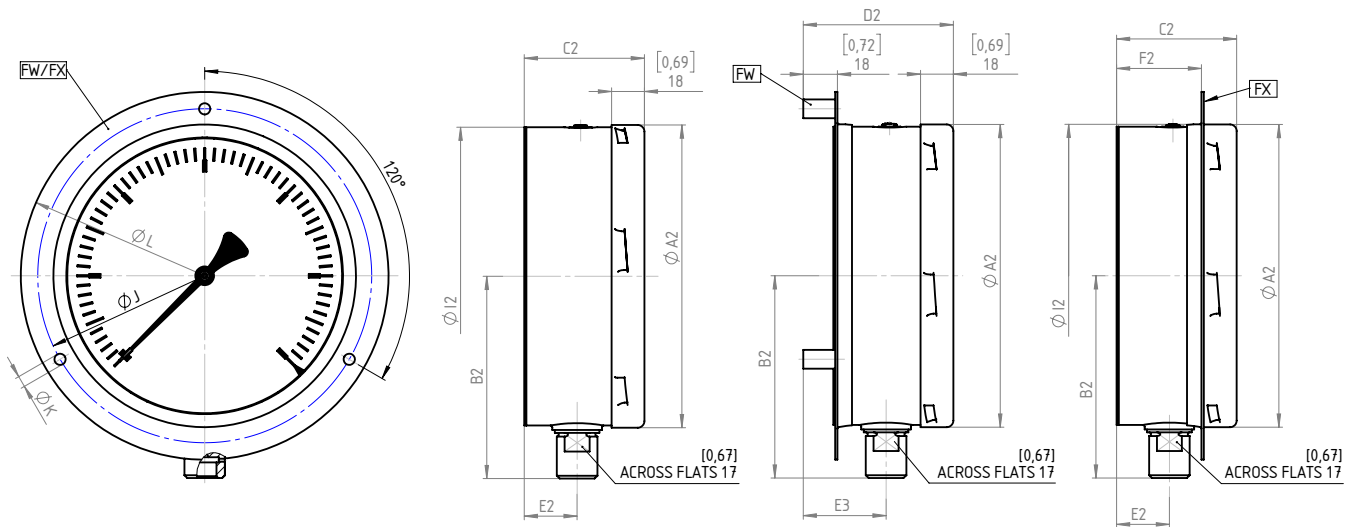
C4	CD-4 calibration certificate
C43	CD-4 calibration certificate option according to DIN EN 10204/3.1
HY	Hydrostatic pressure test
ML	Mass spectrometer leak test



Data Sheet

GENERAL DIMENSIONS (DIMENSION IN MM [INCH])

- Model T6500
- Case option FW & FX



GENERAL DIMENSIONS

NG	A2	B2	C2	D2	E2	E3	F2	I2	J	K	L
100 mm	[3,97] 101	[3,06] 78	[2,38] 61	[2,91] 74	[1,02] 26	[1,55] 39	[1,63] 42	[4,00] 102	[4,65] 118	[0,24] 6	[5,20] 132
160 mm	[6,35] 161	[4,24] 108	[2,52] 64	[3,15] 80	[1,11] 28	[1,74] 44	[1,78] 45	[6,36] 162	[7,01] 178	[0,24] 6	[7,72] 196

