



Type HVC-1000 & HVC-3000 Pressure Volume Controller



APPLICATION

- For applications requiring extremely fine pressure adjustment

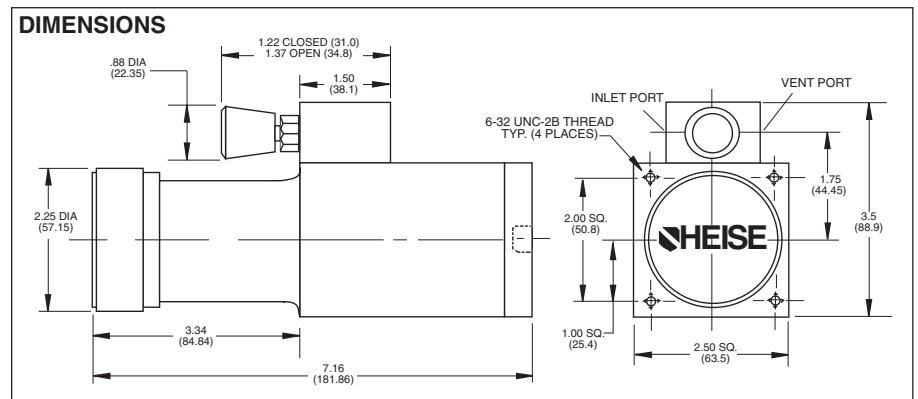
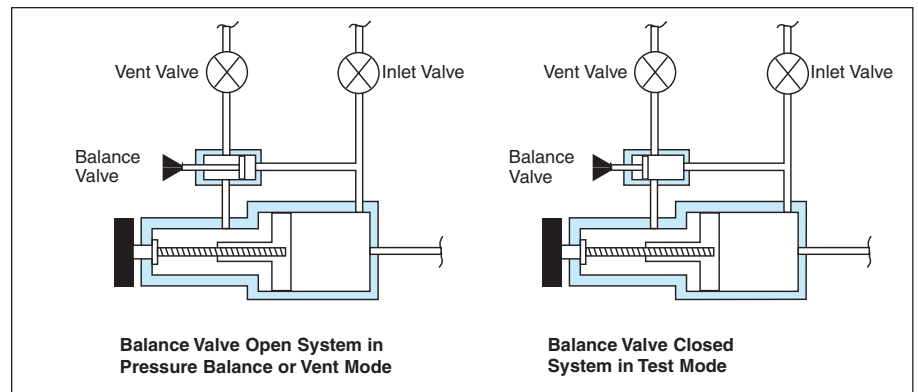
FEATURES

- Precisely set a pressure in a closed pneumatic system
- Pneumatic Volume controller
- Vacuum - 1,000 or 3000psi
- Piston/cylinder device provides fine adjustment in closed pneumatic systems

Heise® Pressure Volume Controllers provide an easy-to-use means of rapidly and accurately adjusting pressure in a closed system. These pressure controllers provide the ability to precisely adjust pressure within 0.00025 psi. When used with digital pressure gauges, dial gauges, transducers, pressure switches, air deadweight testers, manometers and other similar devices they provide a fast and accurate means for setting a precise pressure.

STANDARD SPECIFICATIONS

Model.....	HVC-1000	HVC-3000
Range (psi).....	Vacuum-1000	Vacuum-3000
Proof (psi).....	3000	6000
Burst (psi).....	6000 min.	12,000 min.
Resolution (psi).....	0.00025	0.0005
Volume Change (cubic inches).....	3.5	2.5
Mechanical Rotation (total turns).....	31	61
Connection.....	1/8 NPTF	1/8 NPTF
Operating Temperature. Range.....	20-120° F	20-120° F
Construction	Aluminium body, Stainless Steel, Brass, Teflon, Delrin and Buna-N	



ISO 9001
REGISTERED FIRM

BULLETIN HVC-1000

All specifications are subject to change without notice.
All sales subject to standard terms and conditions.
© Ashcroft Inc. 2008

Ashcroft Inc., 250 East Main Street, Stratford, CT 06614 USA
Tel: 203-378-8281 • Fax: 203-385-0402
email: info@heise.com • www.heise.com