

Industrial and general service gauges

Model 1009

According ASME B40.1
 Nominal size 4 1/2 and 6 inch
 Accuracy: Grade 1A (1 %)

Features

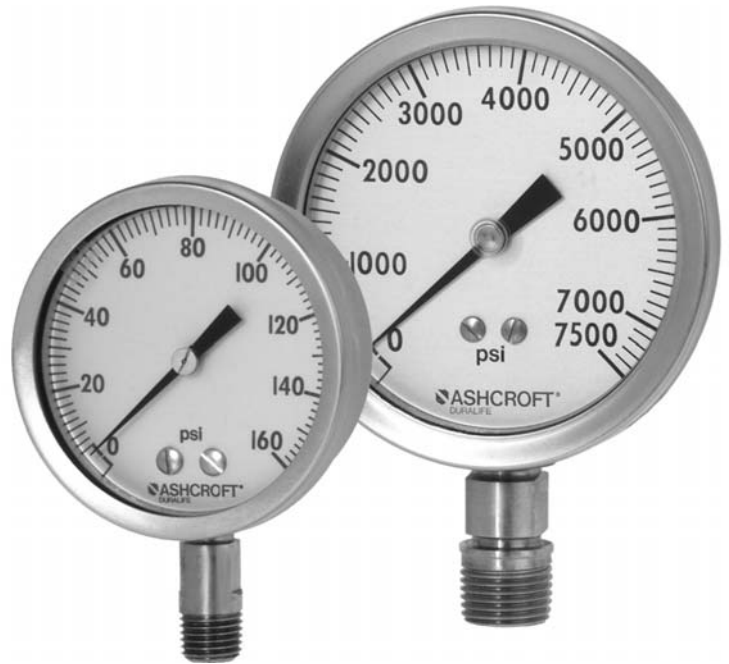
- Rugged construction
- Protection IP54 or IP65
- Overload protection 130 %
- Dry, liquid filled or liquid less (*PLUS!* gauge)
- Measuring system stainless steel or Monel

Ranges

-1 ... 0 bar up to 0 ... 1600 bar
 -30 in. Hg ... 0 psi up to 0 ... 30.000 psi

Applications

Chemical and petrochemical industry
 Machine and apparatus construction
 Food and beverage industry
 Pulp and paper industry



Technical specification	1009	
	4 1/2	6
Dial size in inch	4 1/2	6
Construction	Open front with bayonet ring	
Measuring principle	Bourdon tube	
Range in bar	1 1,6 2,5 4 6 10 16 25 40 60 100 160 250 400 600 1000 1600	
Overpressure limit	-1/0 -1/0,6 -1/1,5 -1/3 -1/5 -1/9	
Pressure type	130 % F.S., short time	
Process connection	Gauge, vacuum and compound	
Process connection	1/4 NPT male, 1/2 NPT male according ANSI/ASME B1.20.1 G 1/4 B male, G 1/2 B male, R 1/2 male tapered (DIN 2999) (metric connection not for brass socket) 9/16-18 UNF-2B Aminco, others on request	
Connection location	Lower, back	
Material		
Pressure connection	Brass, stainless steel 316L (1.4404) or Monel	
Tube	Bronze, stainless steel 316L (1.4404) or Monel (Monel not for dial size 6")	
Case/ring	Stainless steel 304 (1.4301) polished	
Window	Instrument glass, optional laminated safety glass or acrylic glass	
Dial	Aluminum, black markings on white background	
Pointer	Aluminum, black, micrometer adjustment, red set hand, minimum or maximum pointer on request	
Movement	Stainless steel 400 series	
Accuracy	Grade 1A (1 % F.S.), 0,5 % with option DX (former type 1320)	
Permissible		
Ambient temperature	-25 ... 60 °C, liquid filled -45 ... 120 °C	
Medium temperature	Max. 120 °C	
Storage temperature	-40 ... 65 °C	
Effect	Max. 0,3 % / 10 K	
Protection according EN 60 529/IEC 529	IP54 (dry), IP65 (liquid filled), optional IP65 for dry gauges	
Filling liquids	Glycerin, silicone, halocarbon, others on request Optional dampened movement (liquid less gauge), functions as liquid filled gauge (<i>PLUS!</i> gauge)	
Mounting	Standard stem, optional flush or surface	
Weight dry/filled in kg	0,8/1,2	1,0/1,6
Accessories, options	Diaphragm seals, valves, NACE	

